

Appendices

Appendix 1: Surgical approach and complications (for the expedited group)

	Team A	Team B	Team C
Number of cases	63	38	19
Surgical approach	Temporal clear cornea	Superior clear cornea	Temporal clear cornea
Mean phako- emulsification time (seconds)	56	87	66
Paracentesis stitched	0	0	0
Section stitched	1	3	0
Iris hooks	0	0	1
Iris damage	0	1	0
Anterior vitrectomy performed	1	2	1
Posterior capsular opacification noted at 6 months	2	8	2
Yag capsulotomy performed during study period	4	4	2

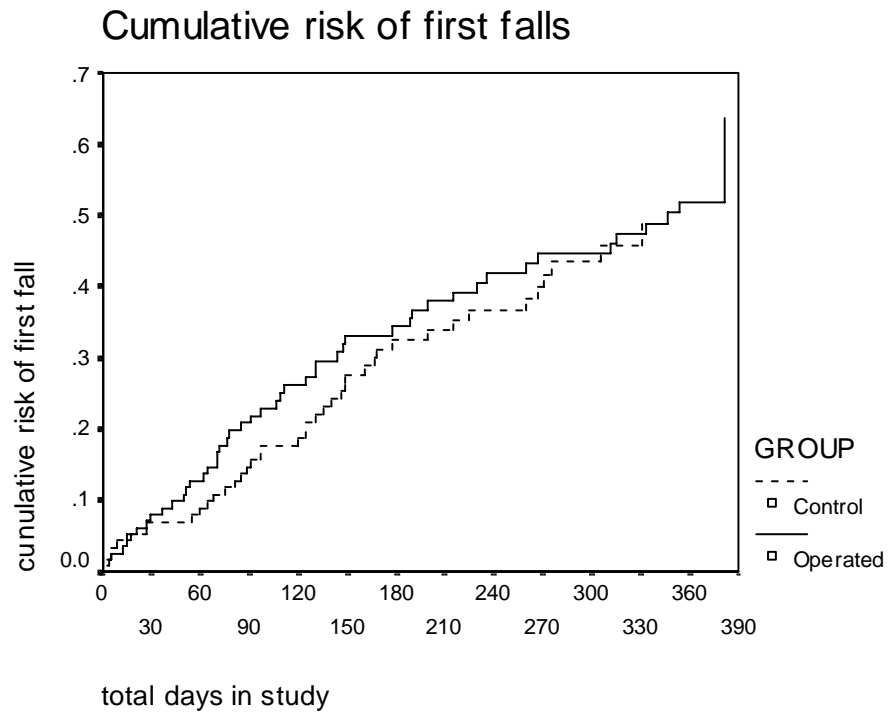
Appendix 2: Baseline characteristics in expedited and routine surgery groups

	Expedited group n=120		Routine group n=119	
	Median	Range	Median	Range
Age / years	79.2	70-90	79.9	70-92
Days from referral to clinic appointment	355	0-972	399	0-767
Days from randomisation to operation	30	8-204	316	37-527
Number of co-morbid diagnoses	8	5-11	8	4-11
Number of drugs	3	0-14	4	0-15
Social support deficits/6	1	0-4	1	0-5
Mini mental state /30	27	10-30	27	21-30
Activity scale	5.9	0.2-36.6	6.1	0.5-32.7
HADS anxiety /28	6	0-18	6	0-18
HADS depression /28	4	0-15	4	1-12
Barthel Index /20	19.0	13-20	19.0	8-20
Confidence (FES) /100	90	23-100	90	13-100
Euroqol /1.0	0.76	0.09-1.0	0.73	-0.08-1.0
London Handicap Scale /100	85.2	43.6-100	84.3	49.5-100
Visual disability VF-14 /100	90.9	32.5-100	89.6	32.5-100
Corrected visual acuity (logMAR)	0.06	-0.40-0.98	0.08	-0.20-1.04
Unaided acuity (logMAR)	0.17	-0.04-0.98	0.24	-0.12-1.04
Pinhole acuity (logMAR)	0.08	-0.08-0.74	0.08	-0.18-0.70
Contrast sensitivity (Pelli-Robson, dB)	1.50	0.20-1.65	1.50	0.30-1.65

Appendix 3: Baseline characteristics in expedited and routine surgery groups

	Expedited group n=120		Routine group n=119	
	N	%	N	%
Falls in last 12 months	57	48	52	45
Falls in last month	15	13	16	13
Lives alone	74	62	72	61
Seen GP in last month	49	41	50	42
Heart problem	39	33	36	30
Chest problem	25	21	23	19
Arthritis	91	76	93	78
Stroke	10	8	7	6
Previous fracture (any)	57	48	57	48
Postural dizziness	42	35	28	24
Postural hypotension	19	16	14	12
Car drivers	14	12	12	10

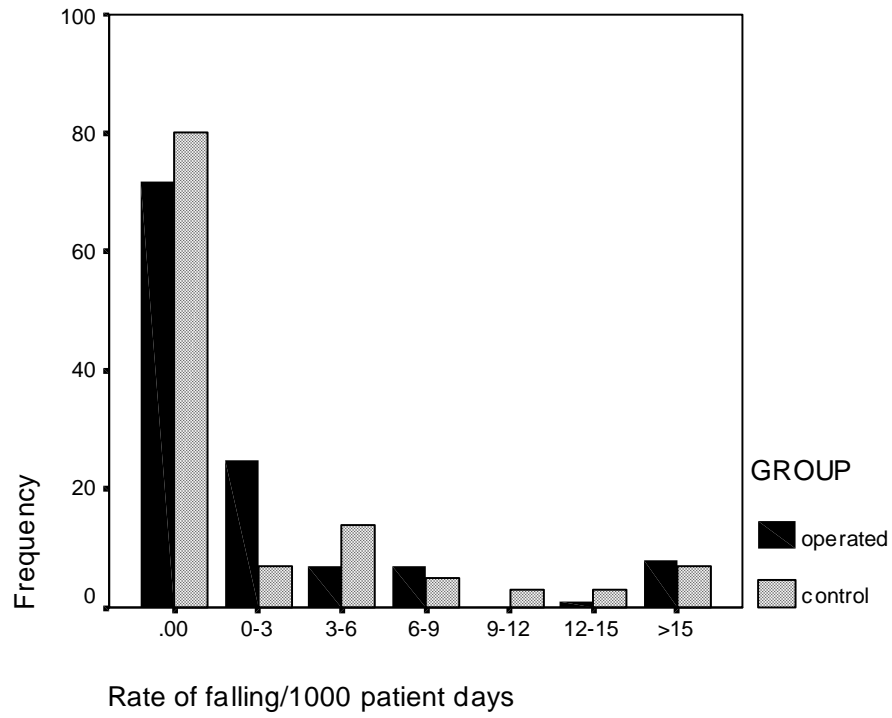
Appendix 4: Cumulative risk of first falls



Numbers at risk

Operated	120	96	84	74	61
Control	119	99	80	58	3

Appendix 5: Distribution of participants by rate of falling in operated and control groups



Appendix 6: Additional references for website

Folstein MF, Folstein SE, McHugh PR. "Mini-mental state". A practical method for grading the cognitive state of patients for the clinician. *Journal of Psychiatric Research* 1975; 12: 189-98

Zigmond AS. Snaith RP. The hospital anxiety and depression scale. *Acta Psychiatrica Scandinavica* 1983; 67: 361-70.

Wade DT. Collin C. The Barthel ADL Index: a standard measure of physical disability? *International Disability Studies* 1988; 10: 64-7.

Euroqol EQ-5D users guide. York; Centre for Health Economics, 1996.

Bailey IL, Lovie JE. New design principals for visual acuity letter charts. *Am J Optom Physiol Opt* 1976;53:740-5.

Pelli DG, Robson JG, Wilkins AJ. The design of a new letter chart for measuring contrast sensitivity. *Clinical Vision Sciences* 1988;2:187-99.