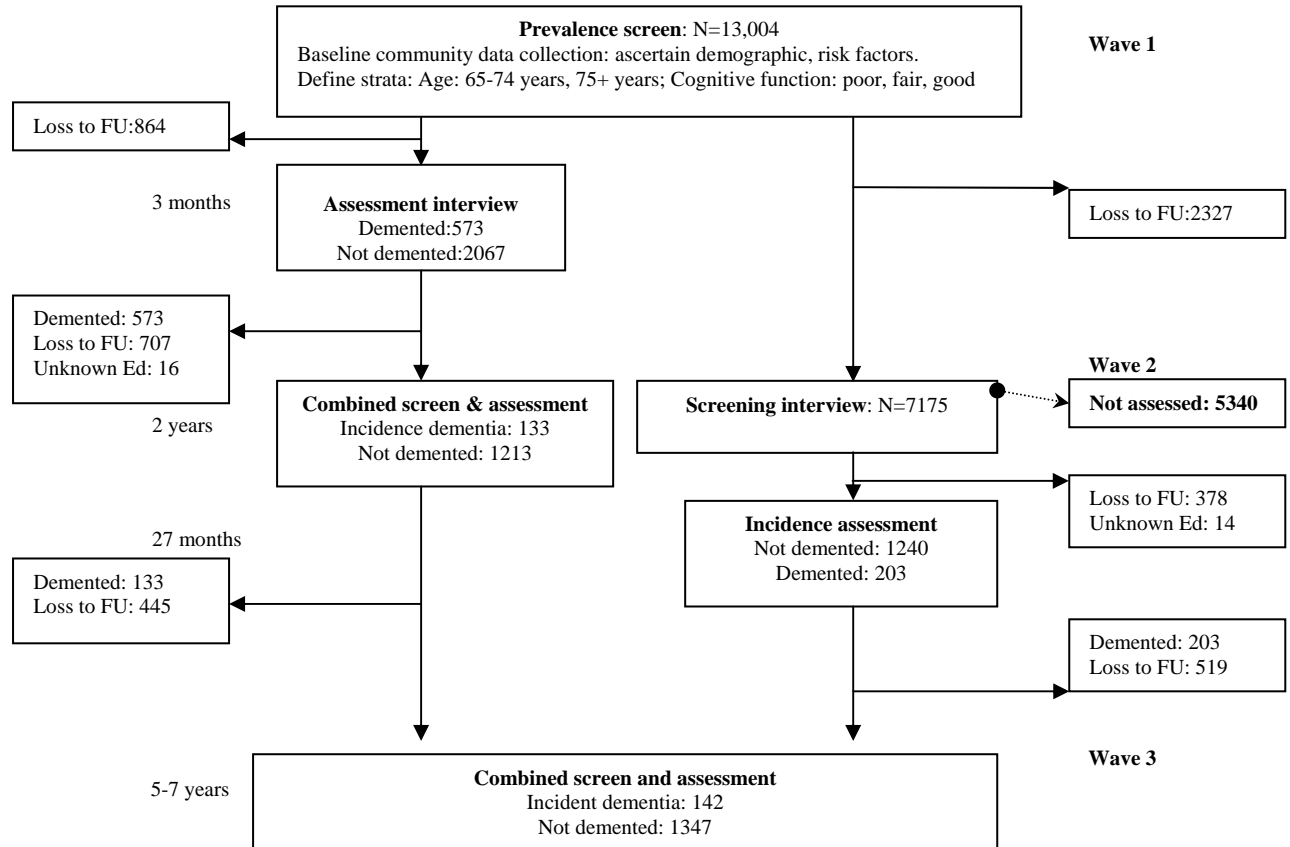


Appendix 1 Table. Self-reported family history information, MRC CFAS

	Wave 2						Wave 3						Both waves	
	Cases (n=133)		Controls (n=2453)		Adjusted Odds ratio [‡]		Cases (n=142)		Controls (n=1347)		Adjusted Odds ratio [‡]		Adjusted Odds ratio [‡] (95% CI)	
Risk factors	Number (%*)		Number (%*)		(95% CI)		Number (%*)		Number (%)		(95% CI)			
<i>Family history (self report)</i>														
Dementia	8	(6)	273	(12)	0.5	(0.2-1.1)	23	(17)	161	(14)	1.5	(0.8-3.1)	1.0	(0.6-1.7)
Alzheimer's disease	2	(2)	54	(3)	0.6	(0.1-2.7)	6	(4)	30	(3)	1.1	(0.3-4.0)	1.1	(0.4-2.7)
Down syndrome	0	(0)	18	(1)	n.a.		0	(0)	6	(<1)	n.a.		n.a.	
Parkinsons disease	4	(4)	110	(4)	0.9	(0.2-3.5)	5	(3)	73	(5)	0.4	(0.1-1.1)	0.7	(0.3-1.7)
Stroke	19	(17)	733	(32)	0.4	(0.3-0.8)	43	(37)	425	(33)	1.0	(0.6-1.7)	0.8	(0.5-1.2)
Heart attack	24	(18)	777	(34)	0.5	(0.3-0.9)	35	(29)	452	(35)	0.9	(0.5-1.5)	0.7	(0.4-1.0)
Leukaemia/lymphoma	2	(1)	90	(4)	0.2	(0.1-1.0)	1	(2)	50	(4)	0.4	(0.0-3.5)	0.3	(0.1-1.3)
Diabetes	11	(7)	354	(14)	0.5	(0.2-0.9)	20	(15)	200	(11)	1.1	(0.6-2.1)	0.6	(0.4-1.0)
Other psychiatric illness	3	(10)	144	(9)	0.4	(0.1-1.2)	7	(3)	100	(8)	0.4	(0.2-1.2)	0.4	(0.2-0.9)

Appendix 2. MRC CFAS study design



Loss to FU: Not interviewed at the next wave, either due to death, refusal or moving away

Not assessed: Individuals without an assessment were not interviewed at wave 3

Unknown Ed: Unknown years of education