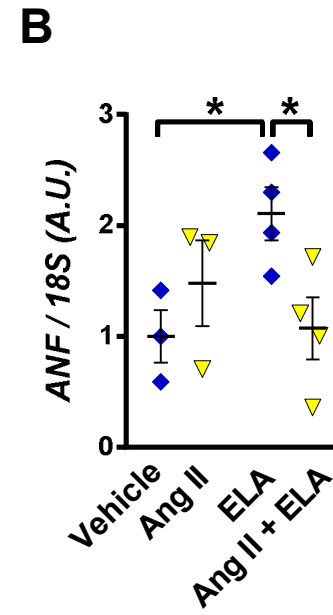
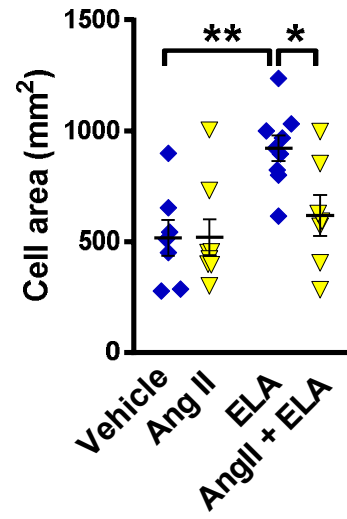
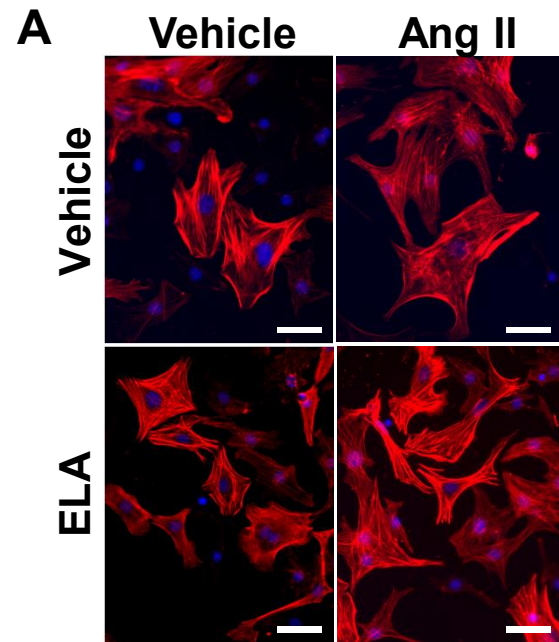


Supplementary Figure 1



Supplementary Figure 2

Supplemental Table1

Gene	Forward Sequence (5'-3')	Reverse Sequence (5'-3')
<i>BNP</i>	ATGGATCTCCTGAAGGTGCTG	GTGCTGCCTTGAGACCGAA
<i>ANF</i>	TGAGAAAAGCACGGAGGTATCC	AGAGTTTTGAAAGTTGCTCACATCA
<i>b-MHC</i>	GCAGCAGTTGGATGAGCGAC	TGCCTCCTCCAGCCTTTCAC
<i>a-MHC</i>	CAAGAGGCAACTGGAGGAGGAAG	GCCTCTGAGCCAGCTTCTTCTTG
<i>Tgfb2</i>	AGAAGCGCGCTTTGGATGCTGC	TGGGACACACAGCAAGGGGAAG
<i>Ltbp2</i>	AAATGGCCAGCTGGAGTGTCCC	TTCACGCACTCCGAGTCCTTGC
<i>Postn</i>	TGCTCTGCTGCTGCTGTTCTG	TGCTGGAGGGCACAGACGTTTG
<i>Col8a</i>	TCAGACTCATTACAGGCCGGTGC	CGCGCAAACCTGGCTAACGGTAC
<i>Agt</i>	GAGGCAAATCTGAGCAACATTG	GAGTTCGAGGAGGATGCTATTGA
<i>Ace</i>	TGAGAAAAGCACGGAGGTATCC	AGAGTTTTGAAAGTTGCTCACATCA
<i>Ace2</i>	CTACAGGCCCTTCAGCAAAG	TGCCAGACCCTAGAGTTGT
<i>Apj</i>	CTCAGCAGCTACCTCATCTTTGT	TGAAGTGGCCACCATAGAGTAGT
<i>Tbp</i>	GGAATTGTACCGCAGCTTCAA	GATGACTGCAGCAAATCGCTT
<i>ELA</i>	AACAACCTCAGGATGGCAAC	CCTTTGTGAAACCCACCACT
<i>l8s</i>	AAACGGCTACCACATCCAAG	CCTCCAATGGATCCTCGTTA
<i>Brg1</i>	CACCTAACCTCACCAAGAAGATGA	CTTCTTGAAGTCCACAGGCTTTC
<i>FoxM1</i>	TCTCCTTCTGGACCATTACC	CTCAGGATTGGGTCGTTTCT

Supplementary Table 2; Echocardiography and Heart Weight to Body Weight ratio data of sham or TAC operated wild type mice treated with either ELA or Apelin.

	sham + Vehicle	TAC + Vehicle	TAC + ELA	TAC + Apelin
N	5	6	5	5
HW / BW (mg/g)	4.73 ± 0.16	7.78 ± 1.12 ^{###}	6.27 ± 0.49*	6.28 ± 0.44**
HR (bpm)	654.47 ± 12.66	542.23 ± 38.24	560.23 ± 21.44	618.38 ± 25.45
FS (%)	52.38 ± 3.83	26.19 ± 5.65 ^{##}	43.68 ± 5.80 ^{##,**}	42.33 ± 6.81 ^{##,**}
EF (%)	84.47 ± 3.30	51.33 ± 9.99 ^{##}	75.12 ± 6.26	73.35 ± 7.56
LVESD (mm)	1.48 ± 0.17	2.88 ± 0.48 ^{##}	1.99 ± 0.32*	2.34 ± 0.42
LVEDD (mm)	3.11 ± 0.15	3.89 ± 0.37	3.51 ± 0.29	3.78 ± 0.33
IVS (mm)	0.68 ± 0.04	0.93 ± 0.03 [#]	0.79 ± 0.11*	0.81 ± 0.05**
PWT (mm)	0.71 ± 0.04	0.91 ± 0.10 [#]	0.79 ± 0.10*	0.82 ± 0.06

Values were means ±SEM. . Abbreviations; N, number of mice per group; HR, heart rate; FS, fractional shortening; EF, ejection fraction; LVESD, left ventricular end systolic diameter; LVEDD, left ventricular end diastolic diameter; IVS, interventricular septum; PWT, posterior wall thickness. # $P < 0.05$ and ## $P < 0.01$ compared with sham operated wild type mice. * $P < 0.05$, ** $P < 0.01$ compared with vehicle treated wild type mice with TAC, one-way ANOVA with Turkey's post hoc test.