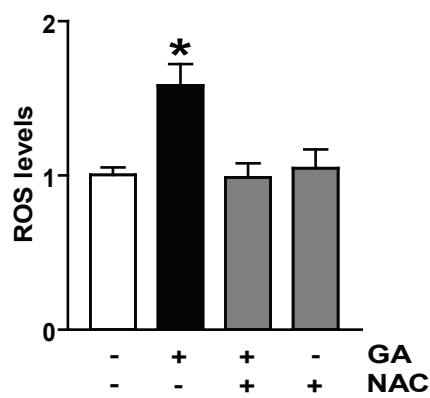


Supplementary figure legends

Supplementary Figure 1 Geldanamycin (GA) induces ROS generation in cultured cardiomyocytes. ROS measured by flow cytometry as described in Methods after 2 h incubation with GA in presence or absent of N-acetylcysteine (NAC). Values are mean \pm SEM (n=5-6). * P <0.05 GA vs. control.

Supplementary Figure 2 Chaperone-mediated autophagy is not necessary for RyR2 degradation during simulated ischemia/reperfusion. Cardiomyocytes transfected with siRNA for LAMP-2A were exposed to si/R. Densitometry analysis shows the ratio of RyR2/ β -actin measured by Western blot obtained after si/R. Values are mean \pm SEM (n=4). * P <0.05 si/R siSRC or si/R siLAMP-2A vs. siSCR.

Supplementary Figure 1



Supplementary Figure 2

