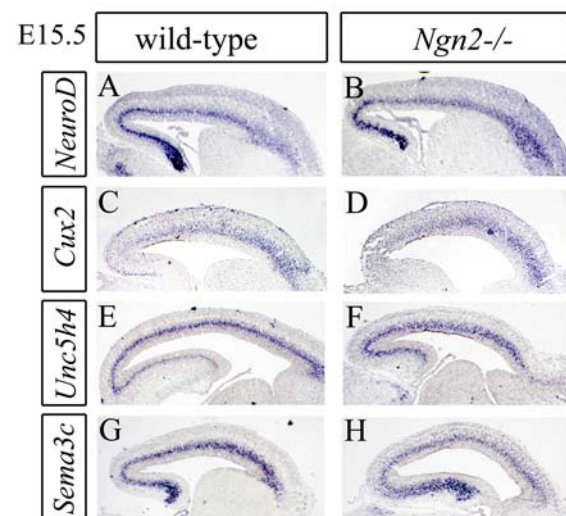
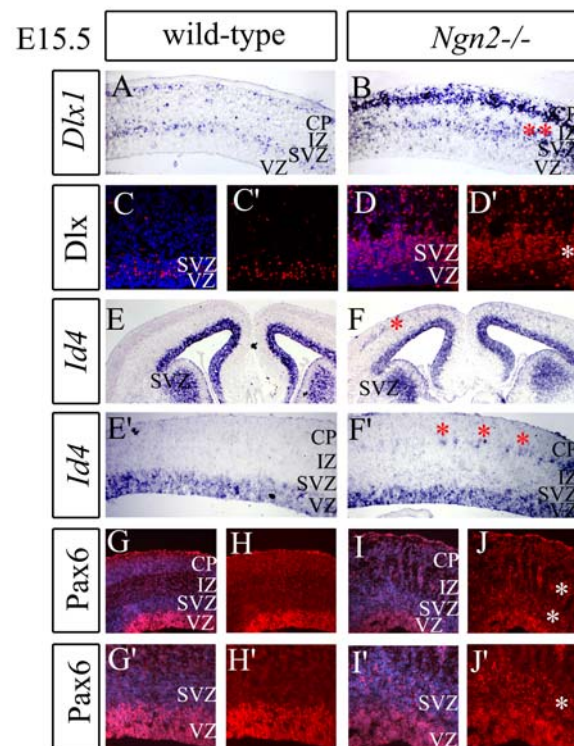


Suppl. Figure 1. Expression of cortical SVZ markers in *Ngn2* mutants. Expression of the dorsal SVZ markers *NeuroD* (A, B), *Cux2* (C, D), *Unc5h4* (E, F) and *Sema3C* (G, H) in E15.5 wild-type (A, C, E, G) and *Ngn2* mutant (B, D, F, H) cortices.

Suppl. Figure 2. Molecular abnormalities in the *Ngn2* mutant SVZ. Expression of markers in E15.5 cortices, including *Dlx1* (A, B), pan-Dlx (C, C', D, D'), *Id4* (E, E', F, F') and Pax6 (G, G', H, H', I, I', J, J') in wild-type (A, C, C', E, E', G, G', H, H') and *Ngn2* mutants (B, D, D', F, F', I, I', J, J'). Asterisks denote ectopic expression in *Ngn2* mutants in B, D', F, F', J and J'. Sections were counterstained with DAPI to label nuclei (C, D, G, G', I, I'). VZ, ventricular zone ; SVZ, subventricular zone; IZ, intermediate zone ; CP, cortical plate.



Britz_Suppl. Fig. 1



Britz_Suppl. Fig. 2