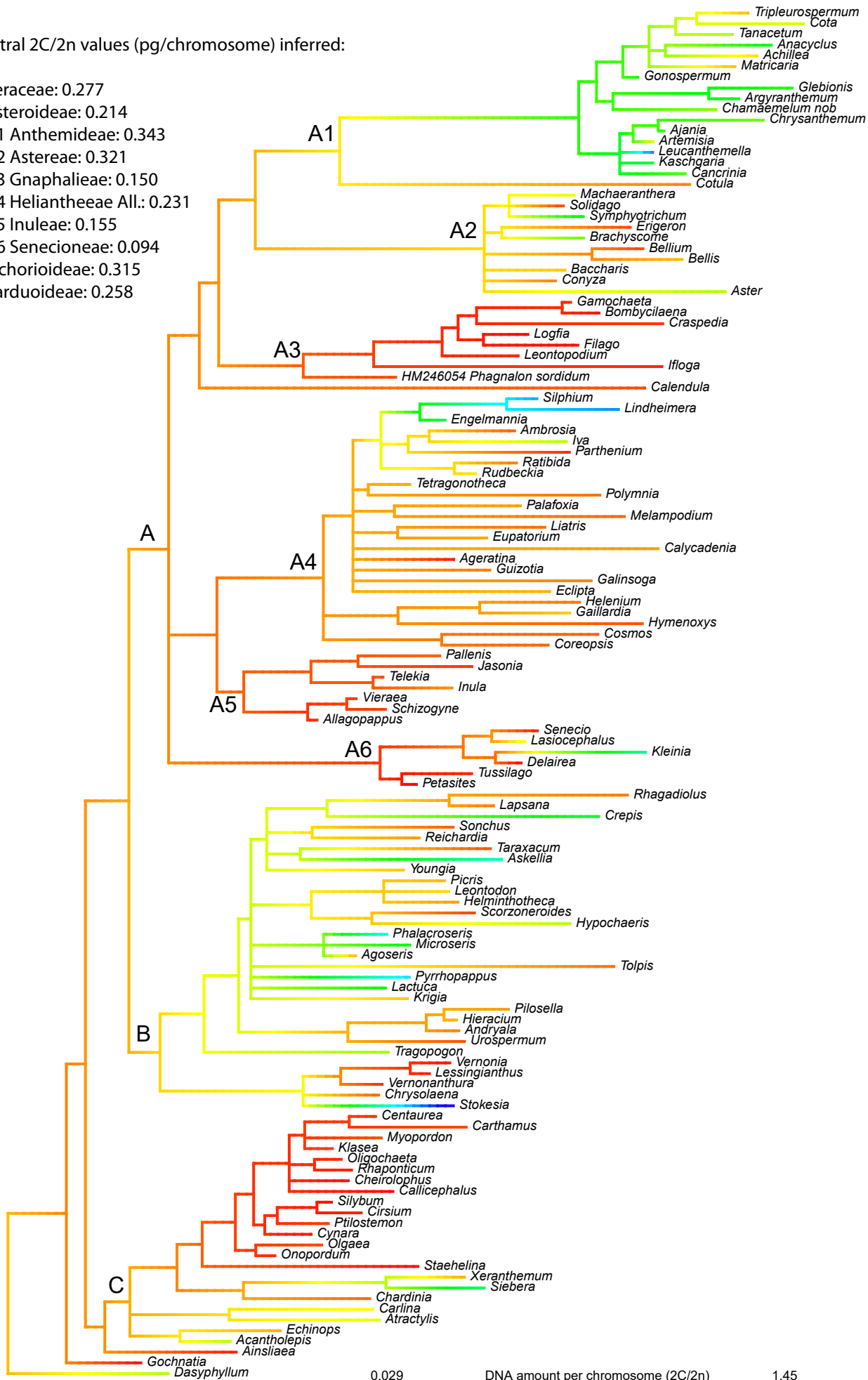


Ancestral 2C/2n values (pg/chromosome) inferred:

- * Asteraceae: 0.277
- A Asteroideae: 0.214
 - A1 Anthemideae: 0.343
 - A2 Astereae: 0.321
 - A3 Gnaphalieae: 0.150
 - A4 Heliantheae All.: 0.231
 - A5 Inuleae: 0.155
 - A6 Senecioneae: 0.094
- B Cichorioideae: 0.315
- C Carduoideae: 0.258



0.029 DNA amount per chromosome (2C/2n) 1.45
length=0.03