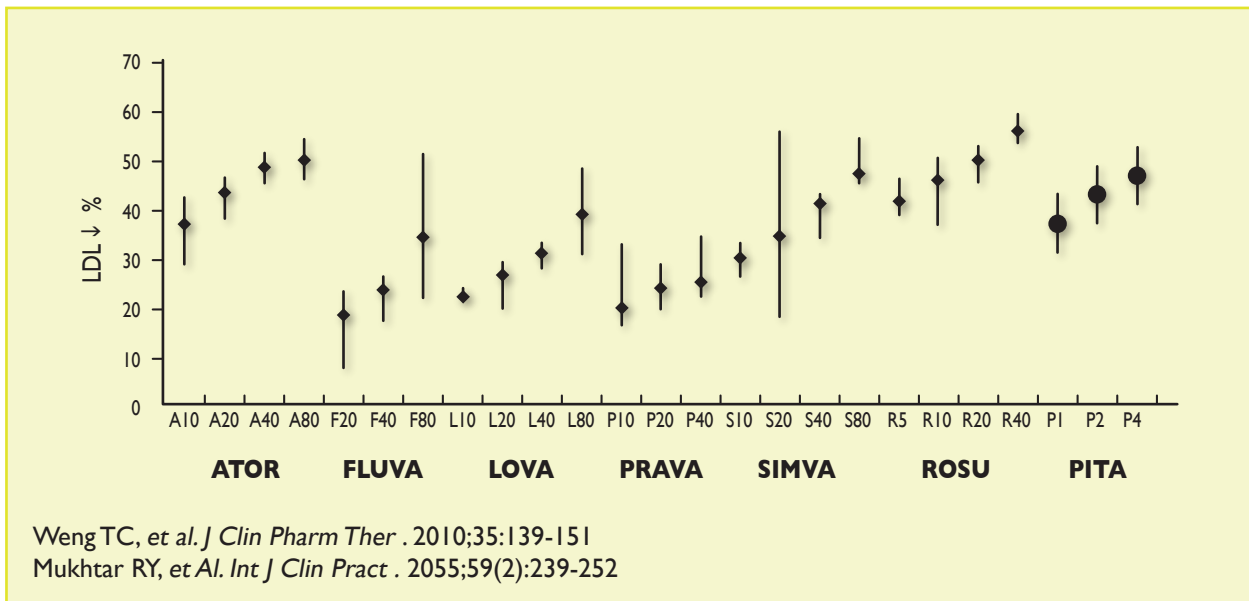


**Supplementary figure A A systematic review and meta-analysis of the therapeutic equivalence of statins**



ATOR = atorvastatin; FLUVA = fluvastatin; LOVA = lovastatin; PRAVA = pravastatin; SIMVA = simvastatin; ROSU = rosuvastatin; PITA = pitavastatin.

**Supplementary Table A Percentage reduction of low-density lipoprotein-cholesterol (LDL-C) requested to achieve goals as a function of the starting value**

Starting LDL-C		Reduction to reach LDL-C goal, %		
mmol/L	~mg/dL	<1.8 mmol/L (~70 mg/dL)	<2.6 mmol/L (~100 mg/dL)	<3 mmol/L (~115 mg/dL)
>6.2	>240	>70	>60	>55
5.2–6.2	200–240	65–70	50–60	40–55
4.4–5.2	170–200	60–65	40–50	30–45
3.9–4.4	150–170	55–60	35–40	25–30
3.4–3.9	130–150	45–55	25–35	10–25
2.9–3.4	110–130	35–45	10–25	<10
2.3–2.9	90–110	22–35	<10	–
1.8–2.3	70–90	<22	–	–

**Supplementary figure B HIV-drug interaction database of the University of Liverpool**

Lipid-Lowering Treatment Selector																			
Charts revised August 2013. Full information available at <a href="http://www.hiv-druginteractions.org">www.hiv-druginteractions.org</a> and <a href="http://www.hiv-druginteractionslite.org">www.hiv-druginteractionslite.org</a>																			
		ATV/r	DRV/r	FPV/r	IDV/r	LPV/r	SQV/r	EFV	ETV	NVP	RPV	MVC	EVG/c	RAL	ABC	FTC	3TC	TDF	ZDV
Statins	Atorvastatin	↑	↑	↑153%	↑	↑490%	↑	↓43%	↓37%	↓	↔	↔	↑	↔	↔	↔	↔	↔	↔
	Fluvastatin	↔	↔	↔	↑	↔	↑	↑	↑	↔	↔	↔	↔	↔	↔	↔	↔	↔	↔
	Lovastatin	↑	↑	↑	↑	↑	↑	↓	↓	↓	↔	↔	↑	↔	↔	↔	↔	↔	↔
	Pravastatin	↔	↑81%	↔	↑	↔	↓50%	↓44%	↓	↔	↔	↔	↔	↔	↔	↔	↔	↔	↔
	Rosuvastatin	↑213%	↑48%	↑8%	↑	↑107%	↑	↔	↑	↔	↔	↔	↔	↑48%	↔	↔	↔	↔	↔
	Simvastatin	↑	↑	↑	↑	↑	↑	↓68%	↓	↓	↔	↔	↔	↑	↔	↔	↔	↔	↔
Fibrates	Bezafibrate	↔	↔	↔	↔	↔	↔	↔	↔	↔	↔	↔	↔	↔	↔	↔	↔	↔	↔
	Clofibrate	↔	↔	↔	↔	↔	↔	↔	↔	↔	↔	↔	↔	↔	↔	↔	↔	↔	↑↑
	Fenofibrate	↔	↔	↔	↔	↔	↔	↔	↔	↔	↔	↔	↔	↔	↔	↔	↔	↔	↔
	Gemfibrozil	↓	↓	↓	↓	↓41%	↓	↔	↔	↔	↔	↔	↔	↑	↔	↔	↔	↔	↔
	Ezetimibe	↑ <sup>a</sup>	↔	↔	↔	↔	↔	↔	↔	↔	↔	↔	↔	↔	↔	↔	↔	↔	↔

**Colour Legend**

- No clinically significant interaction expected.
- These drugs should not be coadministered.
- Potential interaction which may require a dosage adjustment or close monitoring.
- Potential interaction predicted to be of weak intensity (<2 fold ↑AUC or <50% ↓AUC). No *a priori* dosage adjustment is recommended.

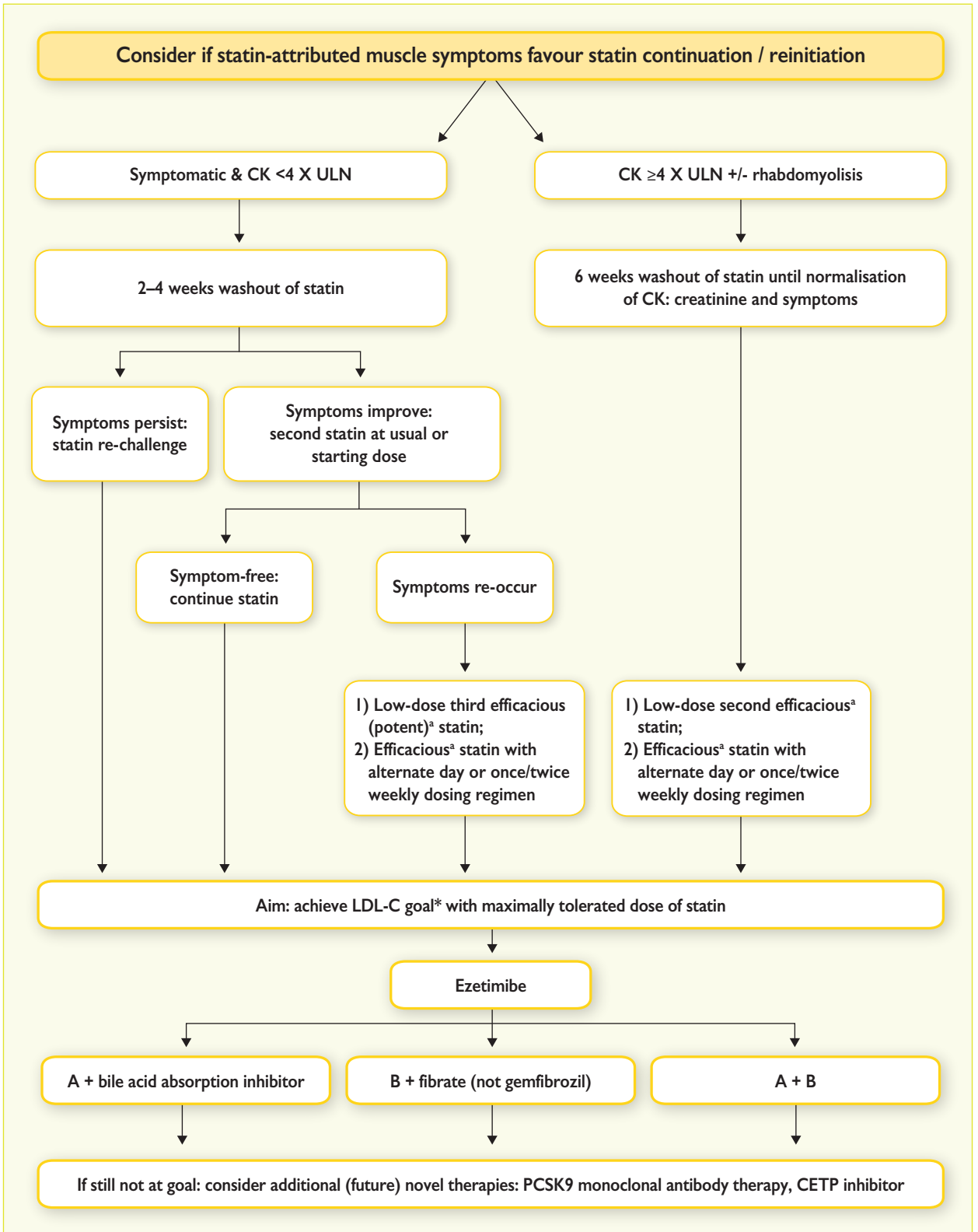
**Text Legend**

- ↑ Potential increased exposure of the lipid-lowering drug
- ↓ Potential decreased exposure of the lipid-lowering drug
- ↔ No significant effect
- ↑ Potential increased exposure of HIV drug
- ↓ Potential decreased exposure of HIV drug

<sup>a</sup>Unboosted atazanavir

Numbers refer to increased or decreased AUC of the lipid-lowering drug as observed in drug-drug interaction studies.

(From Liverpool HIV Pharmacology Group, University of Liverpool)



CETP = cholesteryl ester transfer protein; CK = creatine kinase; LDL-C= low-density lipoprotein cholesterol; PCSK9 = proprotein convertase subtilisin/kexin type 9; ULN = upper limit of the normal range.

<sup>a</sup>Efficacious statin such as atorvastatin or rosuvastatin.

<sup>\*</sup>Reiner Z et al. (2011).