

Figure S2

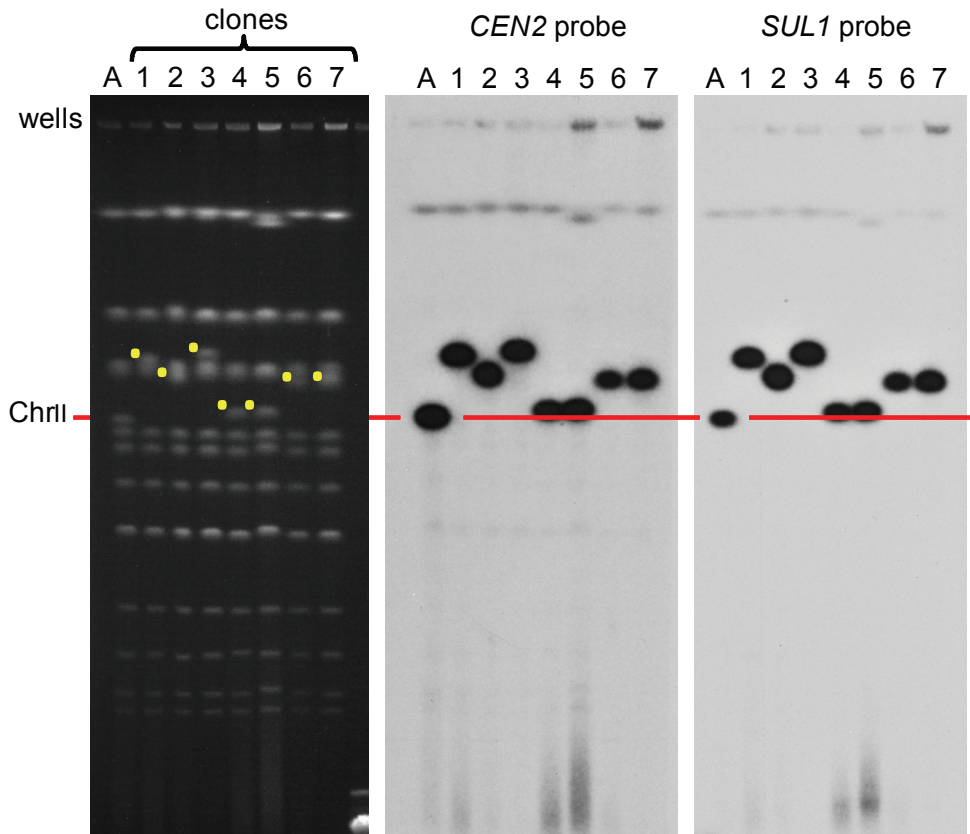


Figure S2 CHEF gel analysis of clones from the seven populations. LEFT: ethidium bromide stained CHEF gel of individual clones. The yellow dots to the left of specific bands indicate chromosomes unique to each evolved clone. RIGHT TWO PANELS: Autoradiograms of Southern blots hybridized with *CEN2* and *SUL1* probes show the identity of chromosome II and the location of the additional copies of *SUL1*.