

Fig.S3

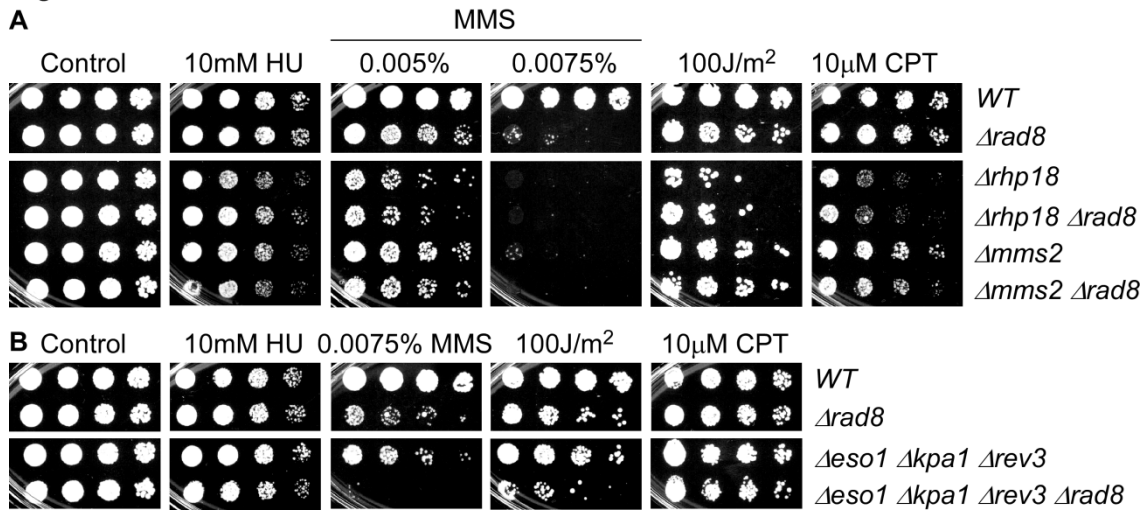


Figure S3 Rad8 functions in the PRR pathway. (A) *rad8Δ* is epistatic with *rhp18Δ* and *mms2Δ*. Strains were grown overnight at 32°C, 1:5 serially diluted and spotted to plain YES rich medium (Control) and YES with indicated drugs. (B) *rad8Δ* is not epistatic with TLS mutants. Strains were grown overnight at 32°C, 1:5 serially diluted and spotted to plain YES rich medium (Control) and YES with indicated drugs. Plates were incubated at 32°C for 3 days.