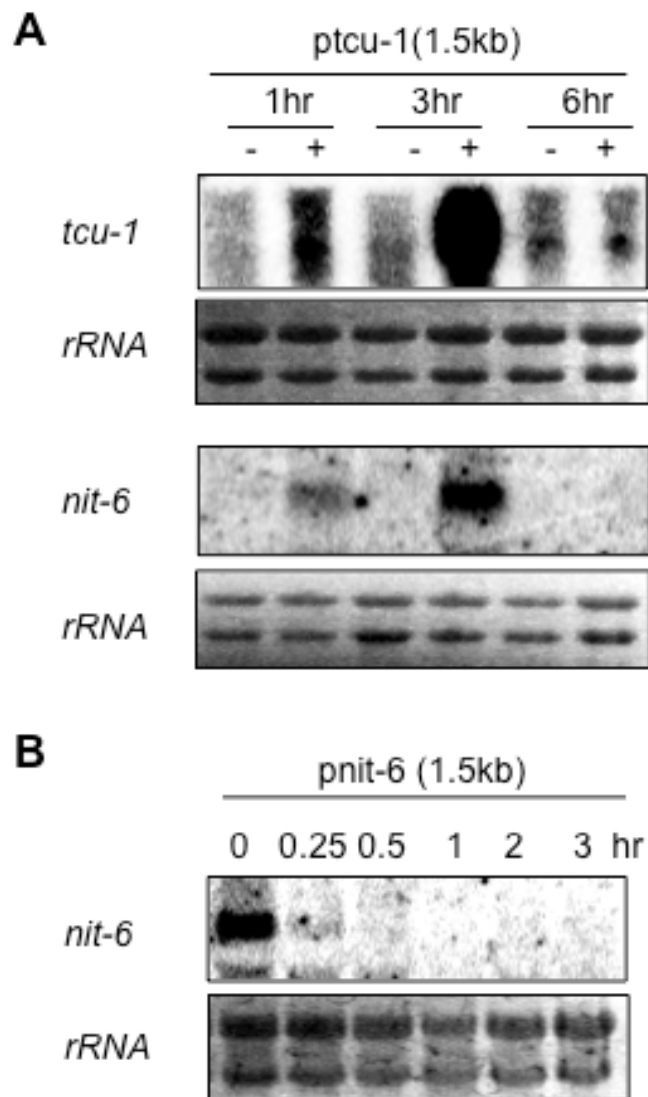


**Figure S1**



**Figure S1. Regulation of the endogenous *tcu-1* and *nit-6* mRNAs. A. Induction profiles for *tcu-1* and *nit-6* by BCS and nitrate, respectively.** The blots from Fig. 2 were stripped and reprobated with probes corresponding to the ORF for *tcu-1* (top panel) or *nit-6* (bottom panel). The corresponding lanes for the rRNA control blots from Fig. 2 are shown for comparison. **B. Repression of the endogenous *nit-6* gene by glutamine.** The blot from Fig. 3 was stripped and reprobated with an ORF probe for *nit-6*. The corresponding lanes for the rRNA control blot from Fig. 3 is shown for comparison.