

Figure S6

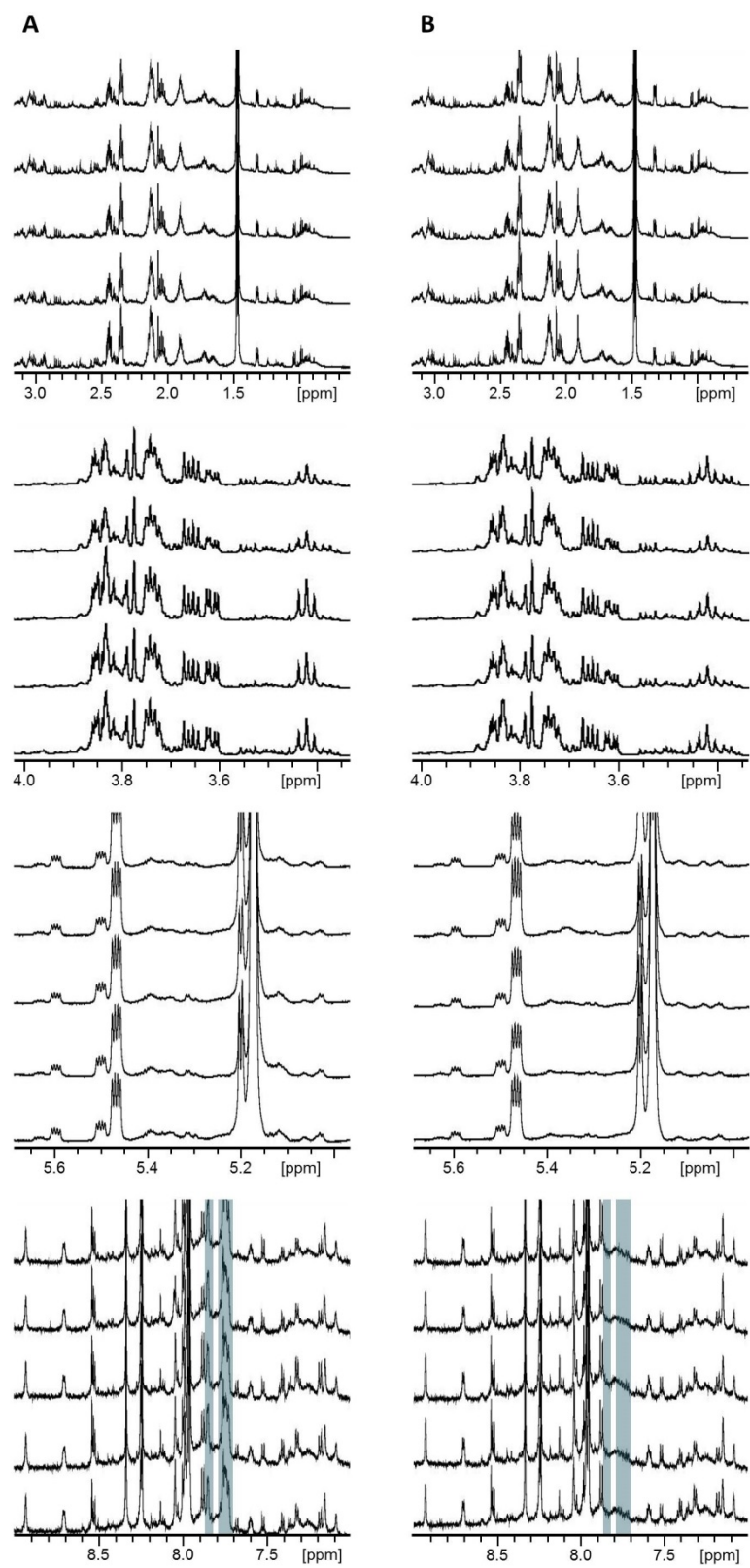


Figure S6. Overlays of ^1H NMR spectra for all five replicates of strain *ptcu-1_1.5*. The region of the spectra containing the BCS resonances are highlighted in blue. Each spectral region is scaled to compensate for differences in resonance intensity.

A. Spectra measured for biological replicates of *ptcu-1_1.5* cultured on VM-BCS.

B. Spectra measured for biological replicates of *pnit-6_1.5* cultured on VM-Cu. Note the absence of the BCS resonances observed between 7.7 and 7.9 ppm in **A**.