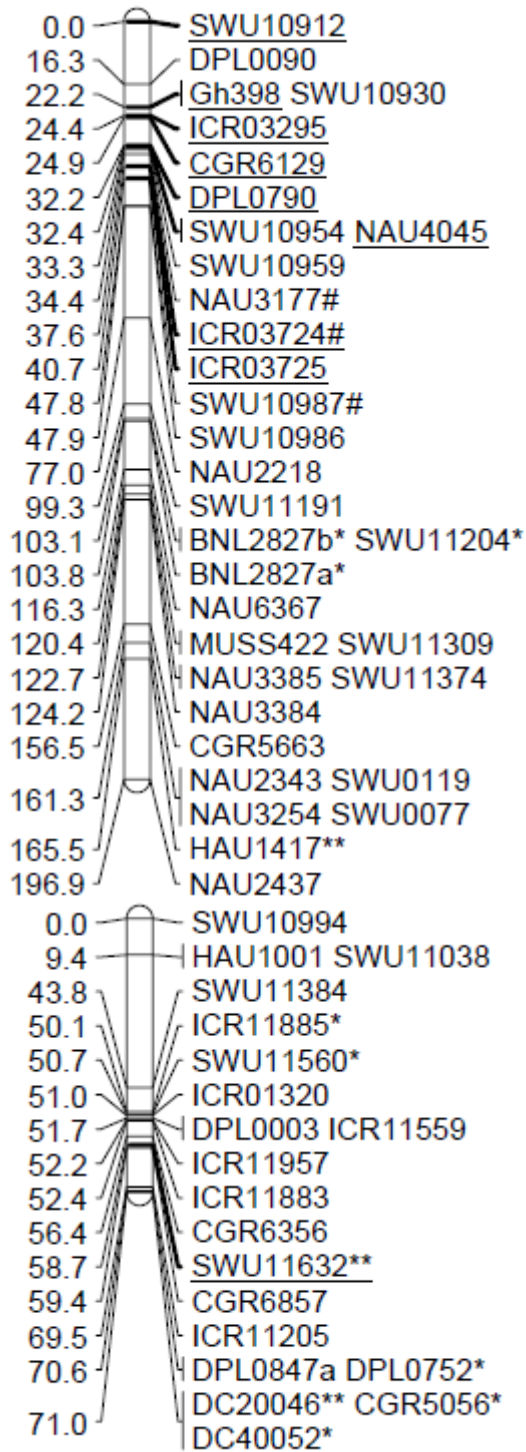
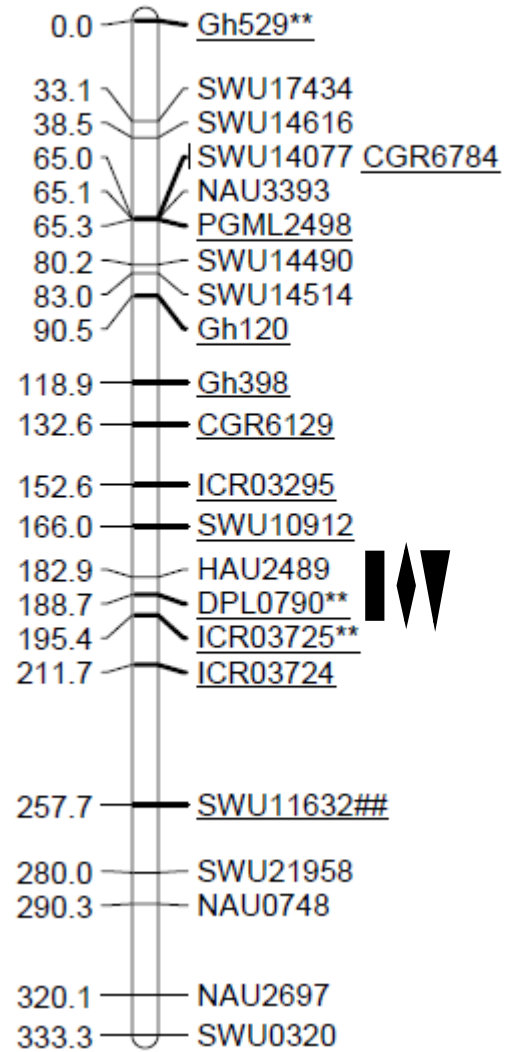


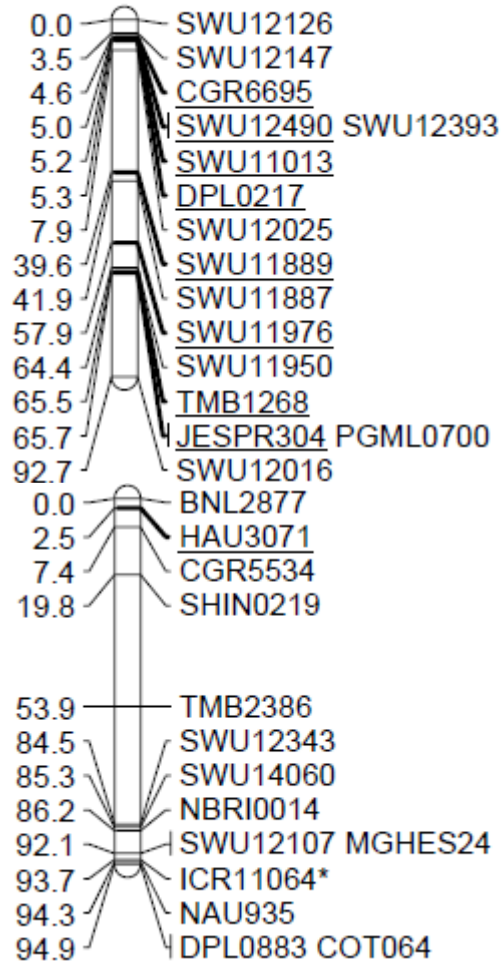
Chr01 XZ



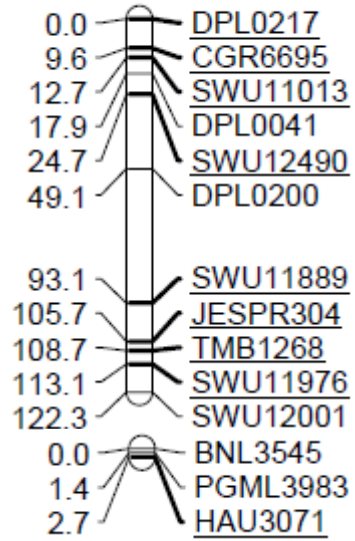
Chr01 XZV



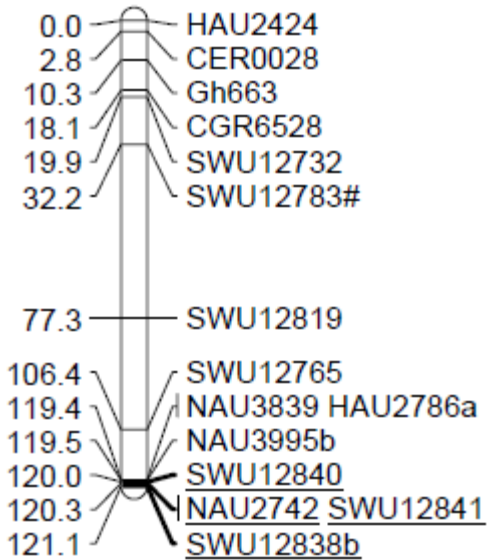
Chr2 xZ



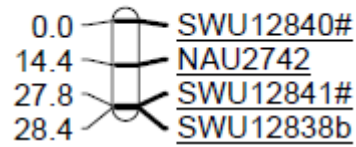
Chr02 xZV



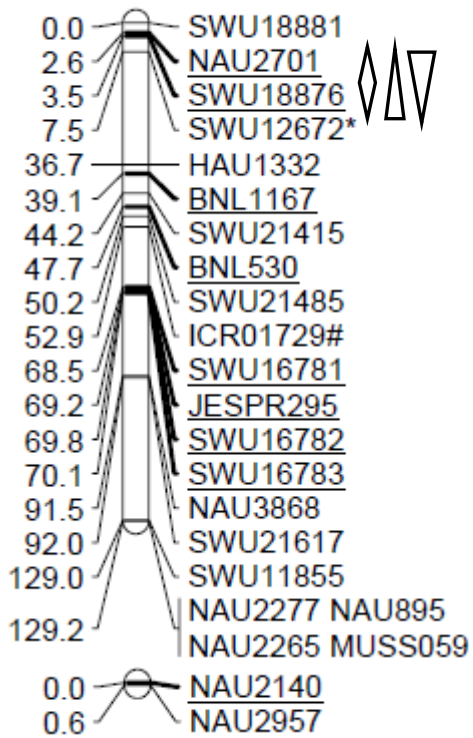
Chr3 XZ



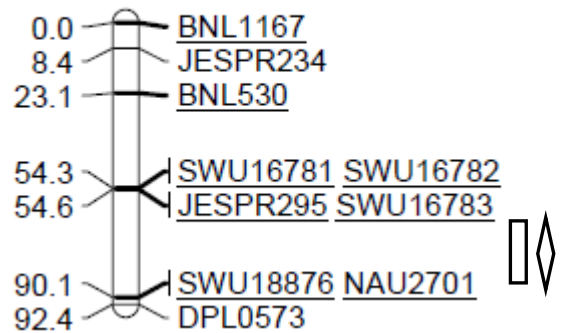
Chr03 XZV



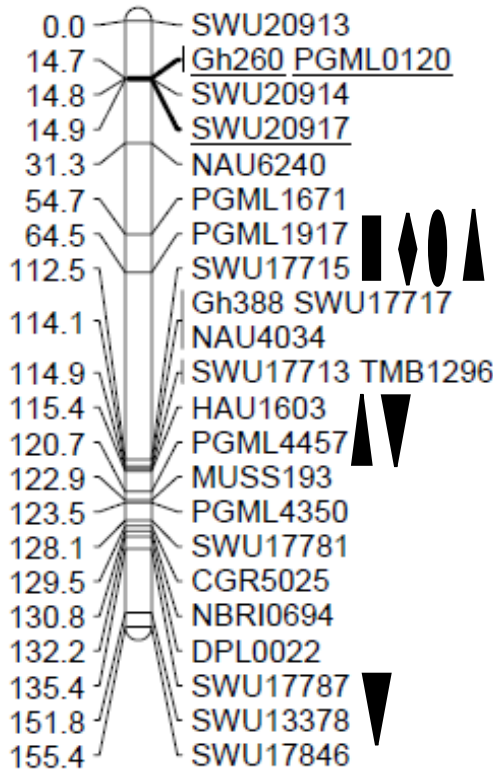
Chr4 XZ



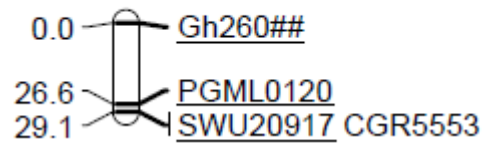
Chr04 XZV



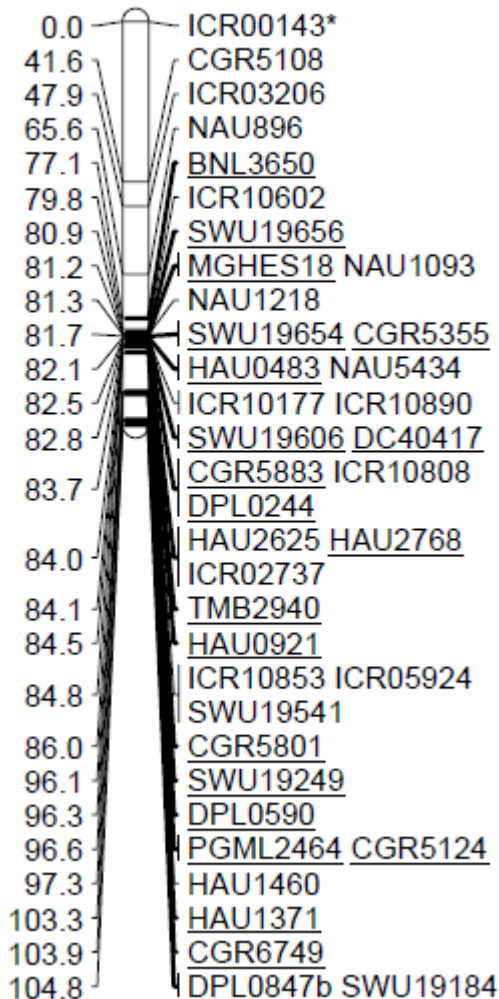
Chr5 xZ



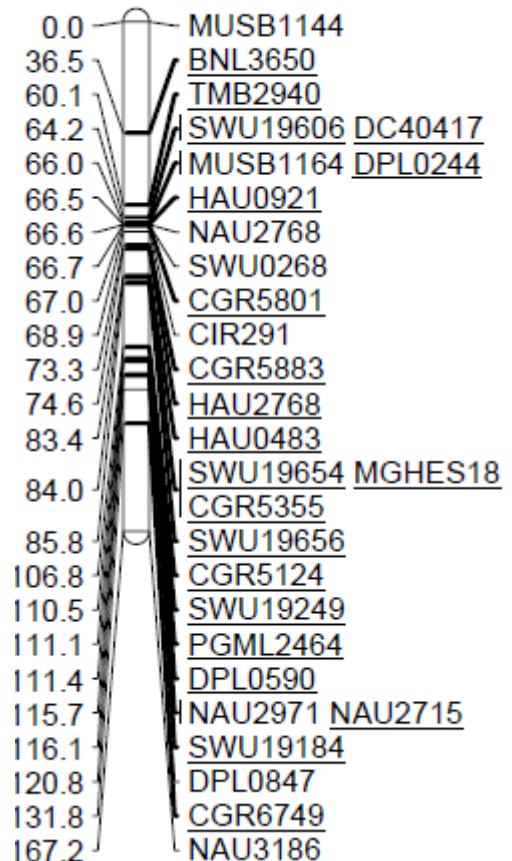
Chr05 xZV



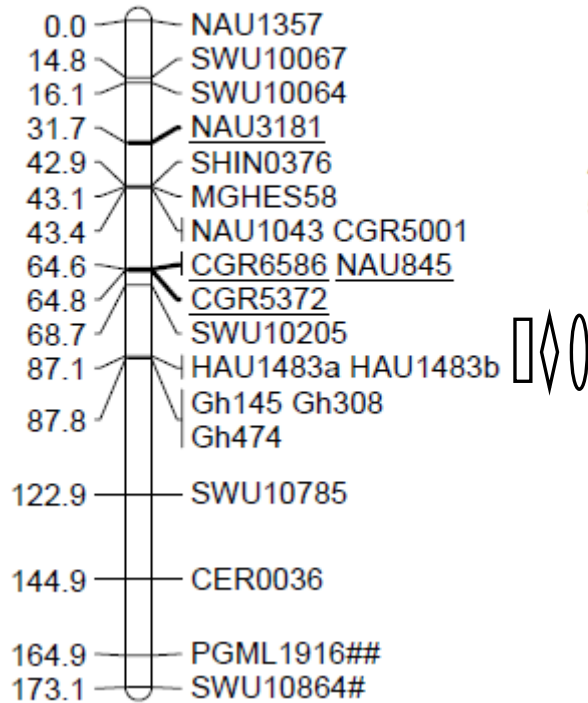
Chr6 xZ



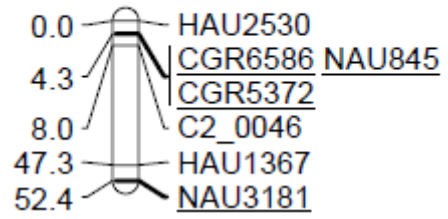
Chr06 xZV



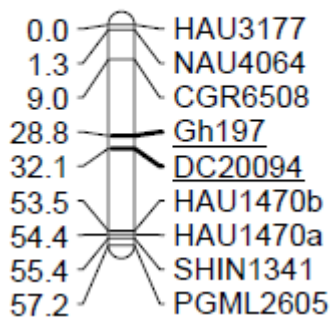
Chr7 XZ



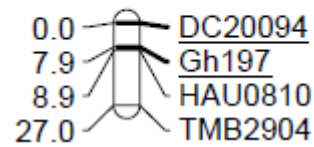
Chr07 XZV



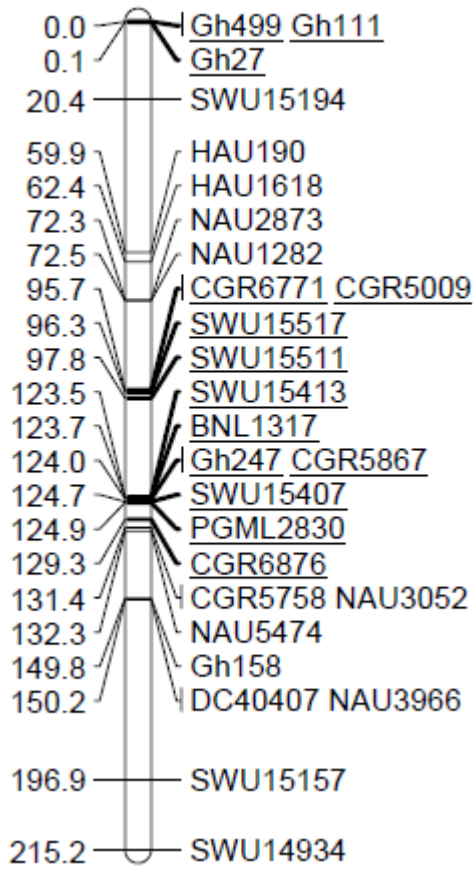
Chr8 XZ



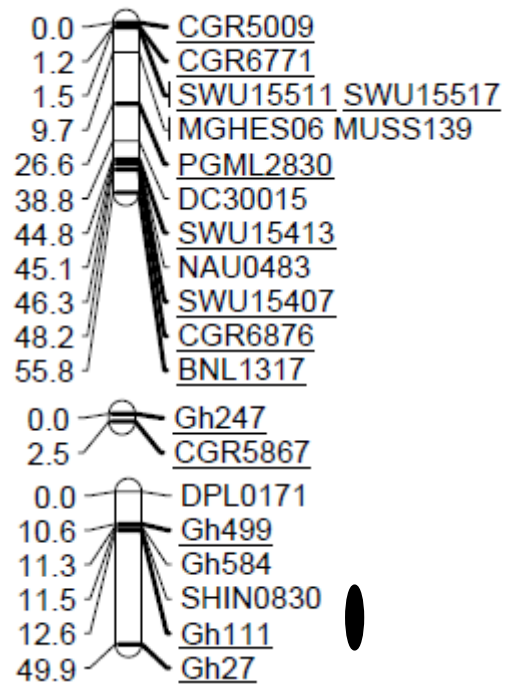
Chr08 XZV



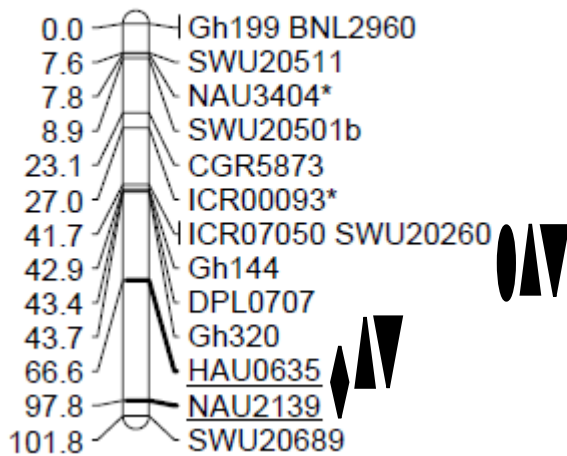
Chr9 XZ



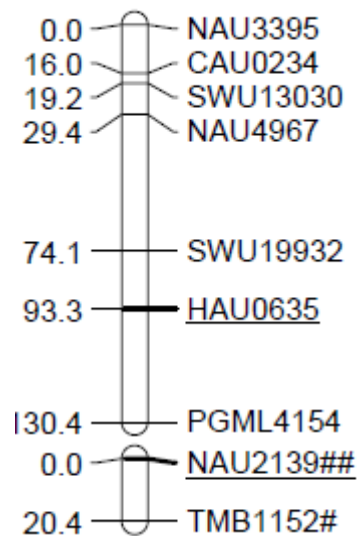
Chr09 xzV



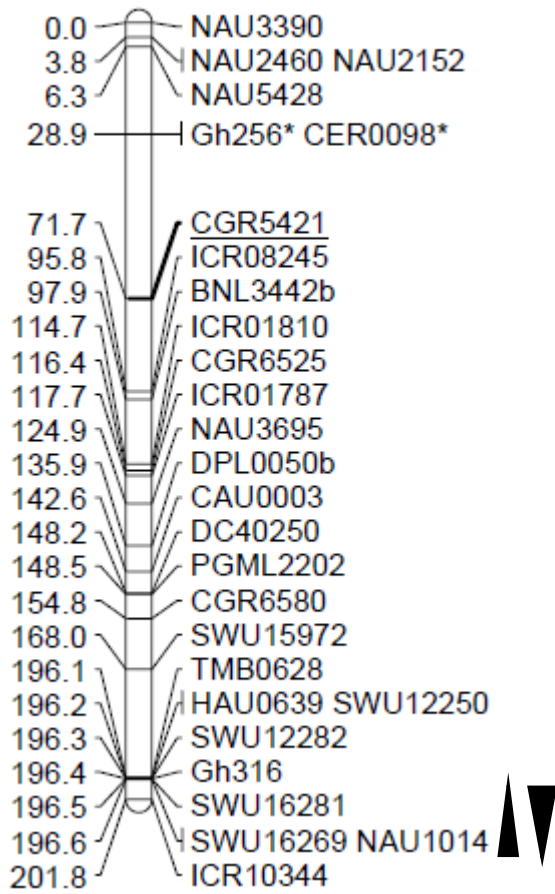
Chr10 XZ



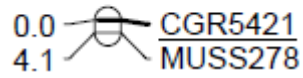
Chr10 xzV



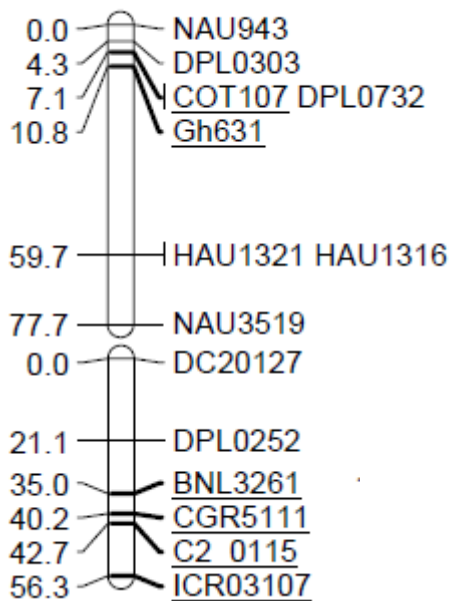
Chr11 XZ



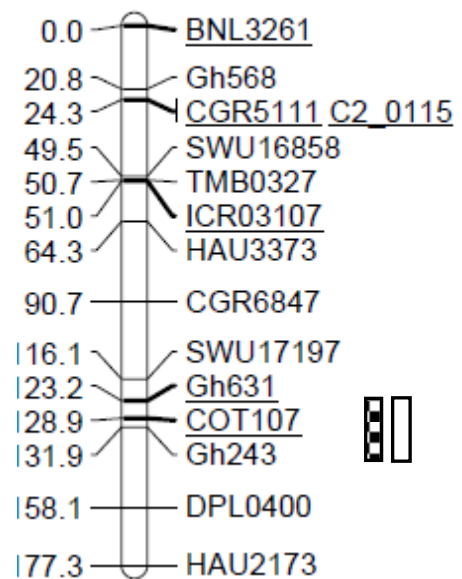
Chr11 XZV



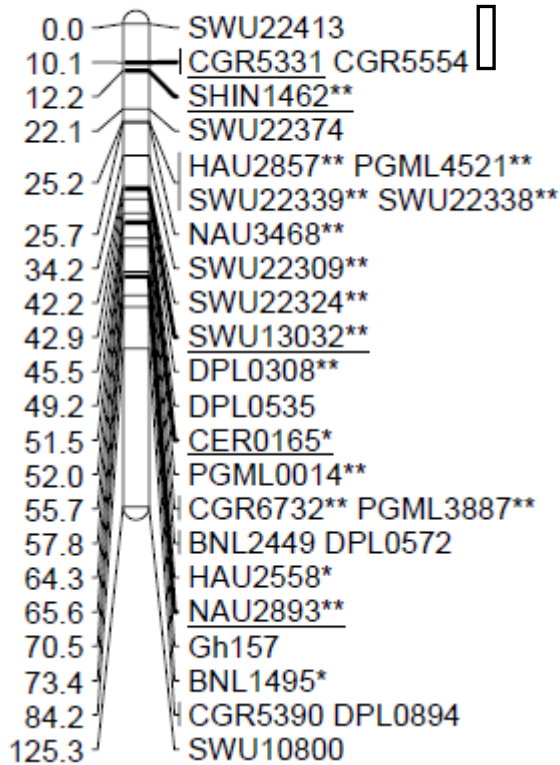
Chr12 XZ



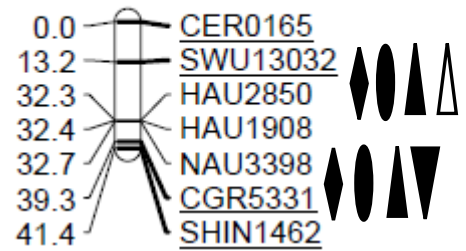
Chr12 XZV



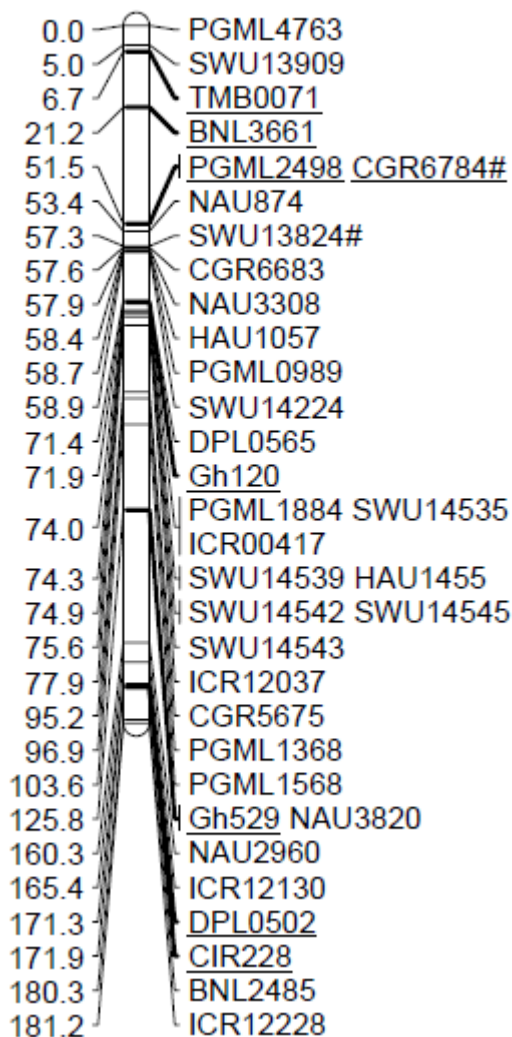
Chr13 XZ



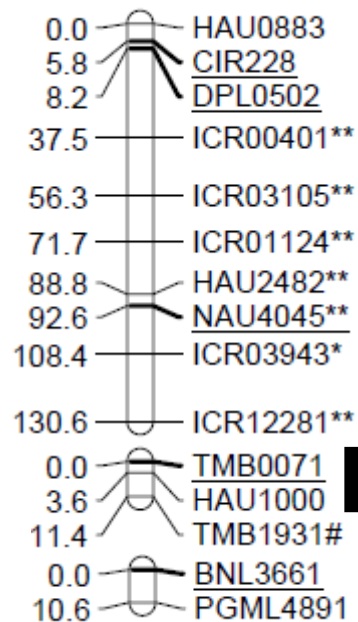
Chr13 XZV



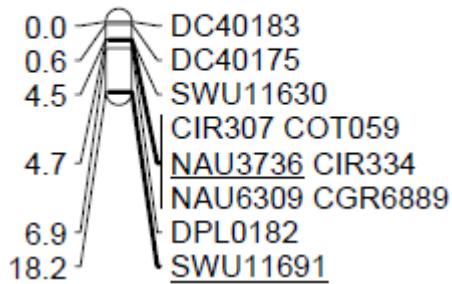
Chr14 XZ



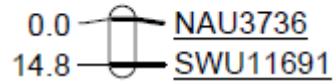
Chr14 XZV



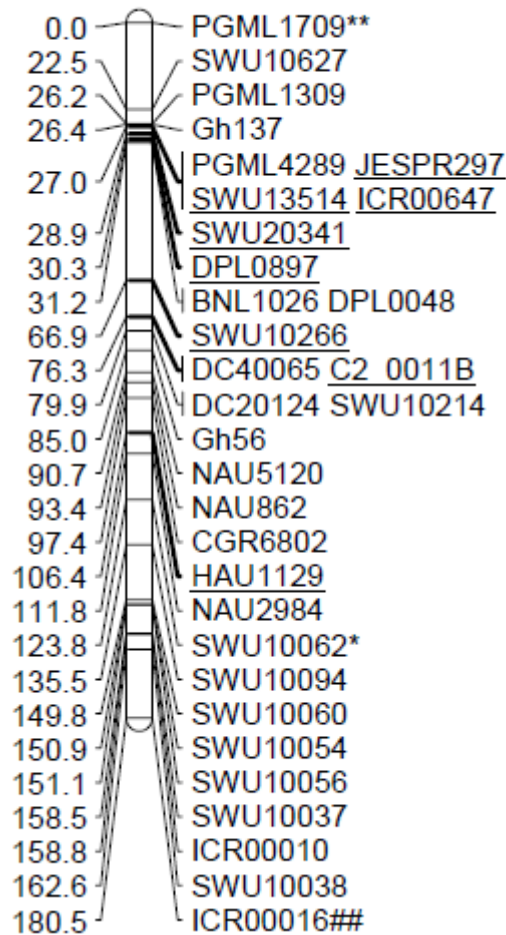
Chr15 XZ



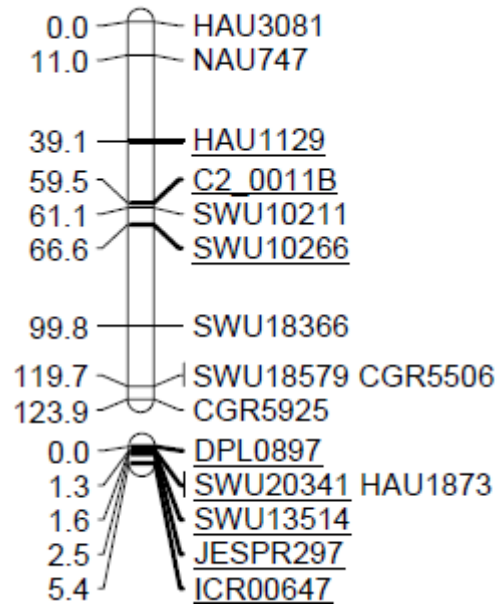
Chr15 xzV



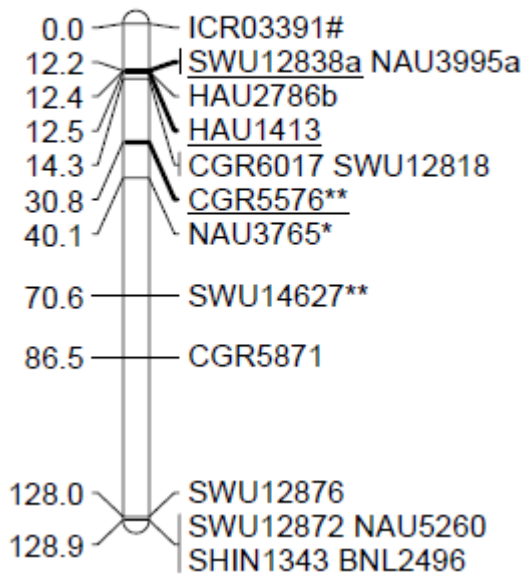
Chr16 XZ



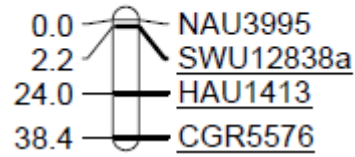
Chr16 XZV



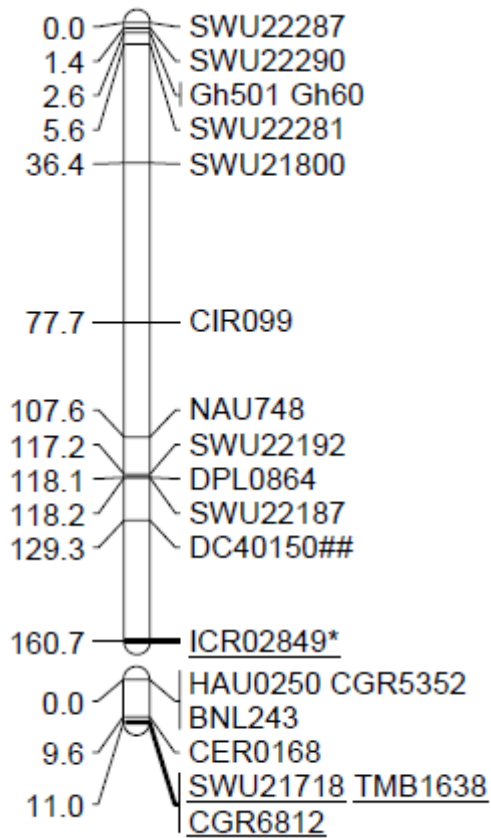
Chr17 XZ



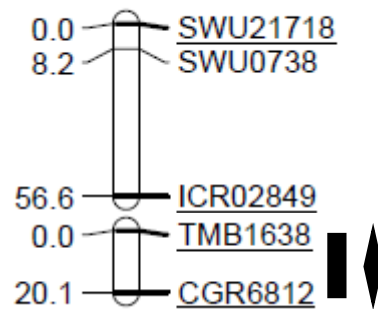
Chr17 XZV



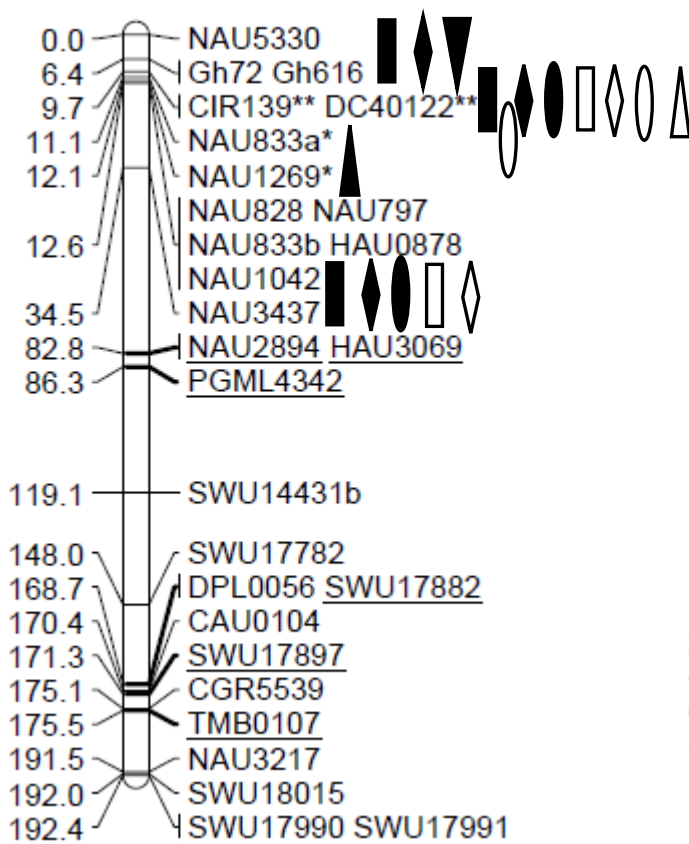
Chr18 XZ



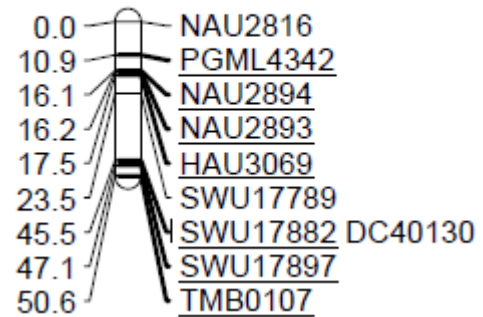
Chr18 XZV



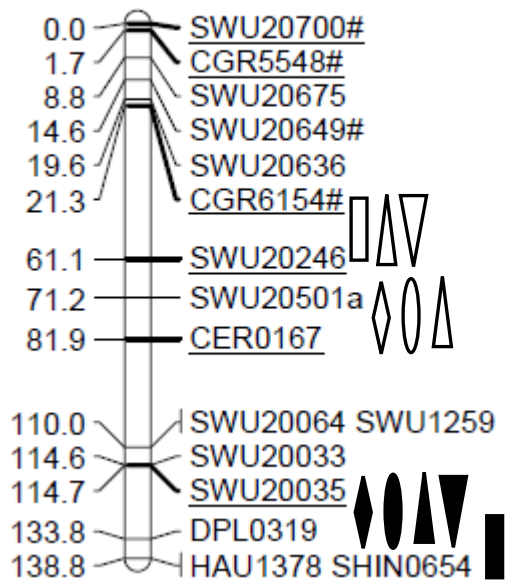
Chr19 XZ



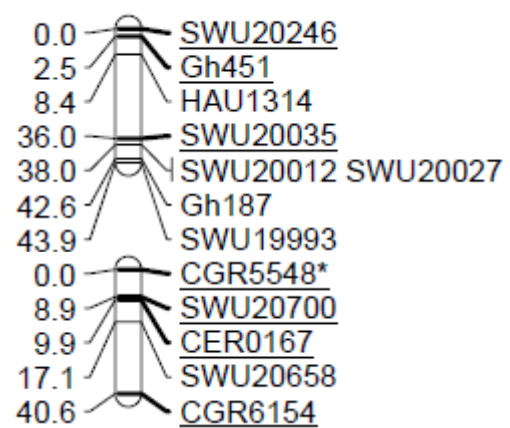
Chr19 XZV



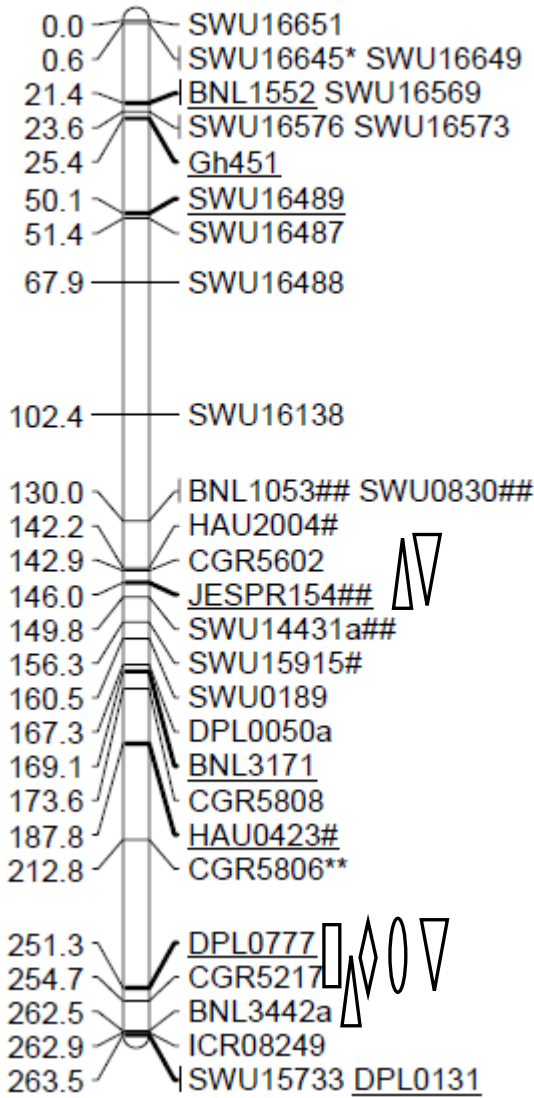
Chr20 XZ



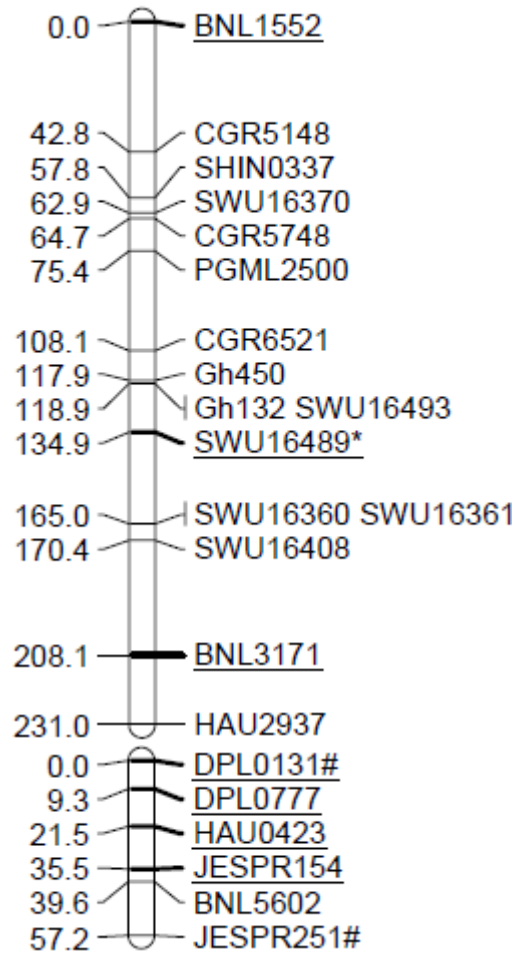
Chr20 XZV



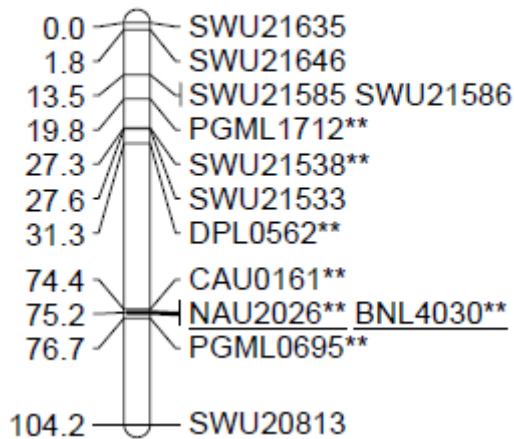
Chr21 XZ



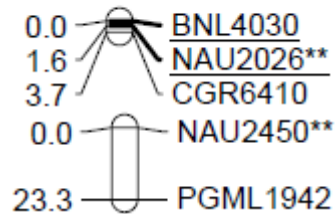
Chr21 XZV



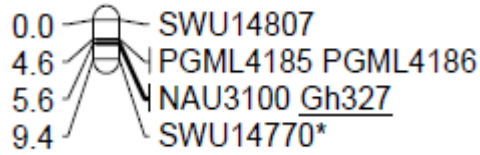
Chr22 XZ



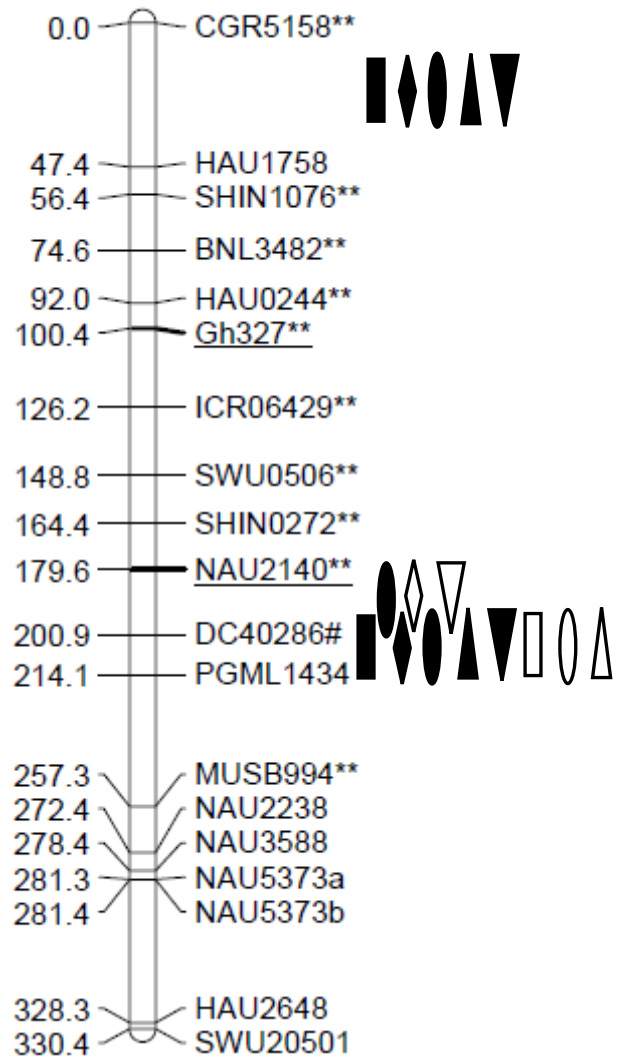
Chr22 XZV



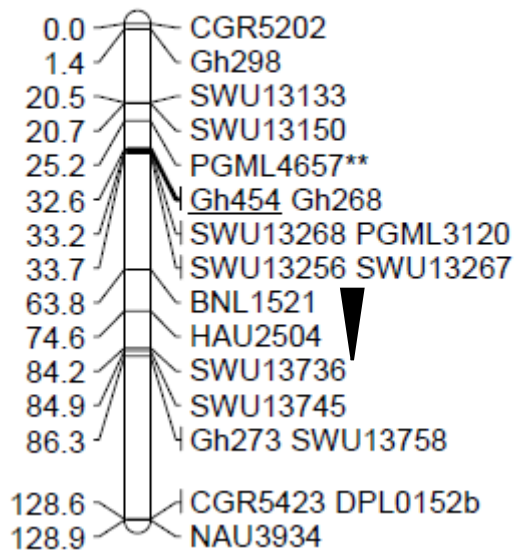
Chr23 xz



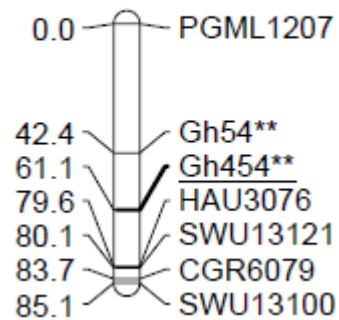
Chr23 xzV



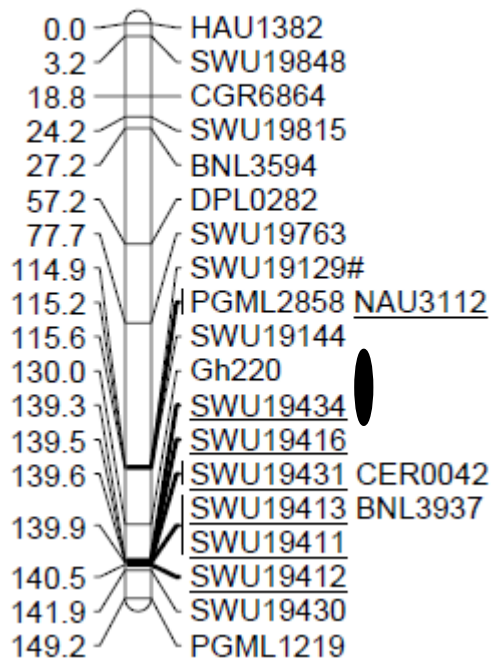
Chr24 xz



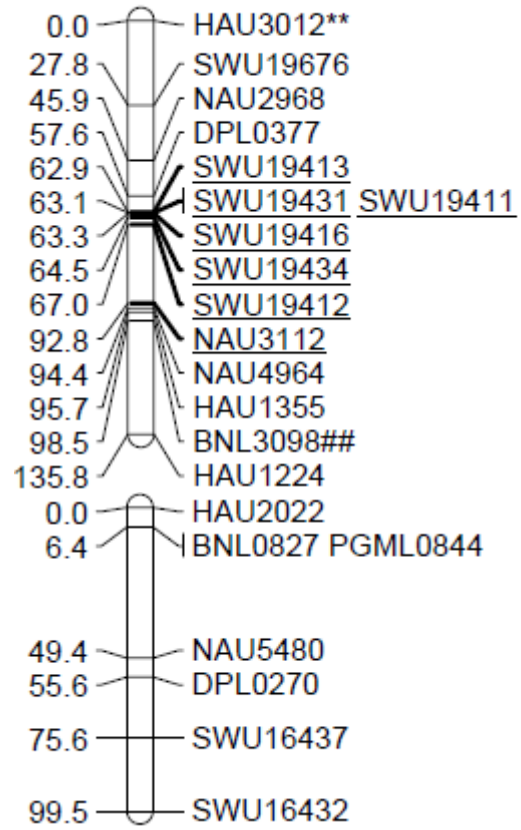
Chr24 xzV



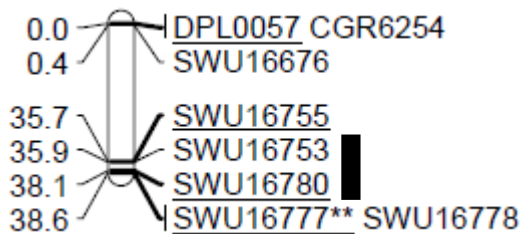
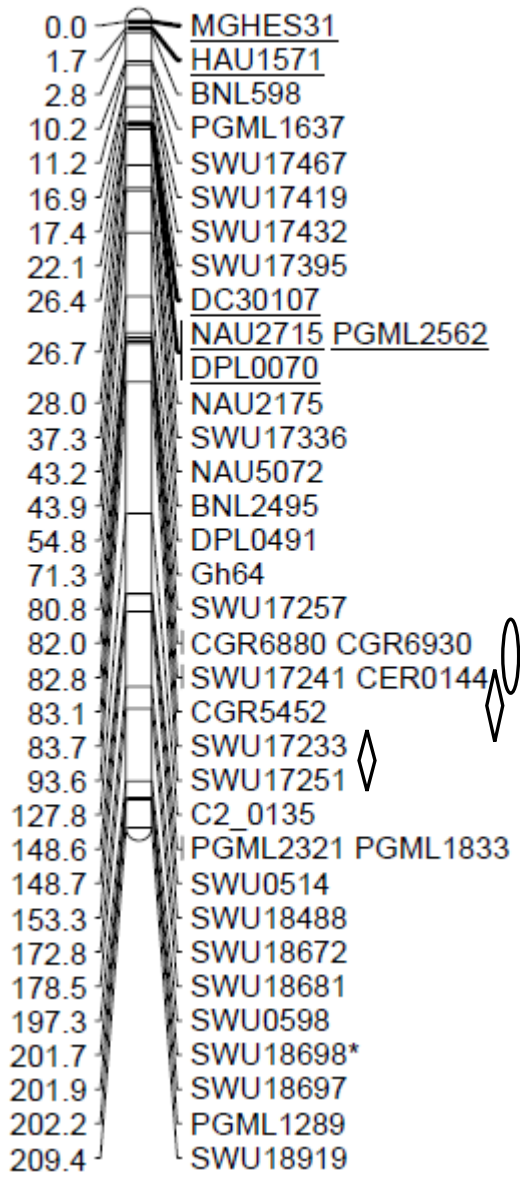
Chr25 XZ



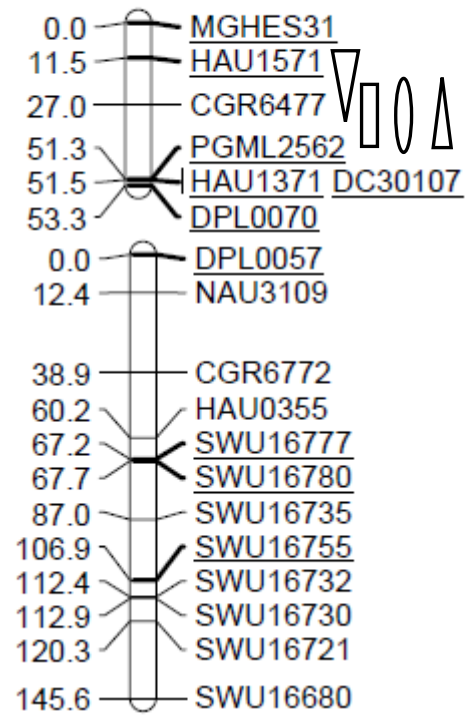
Chr25 XZV



Chr26 XZ



Chr26 XZV



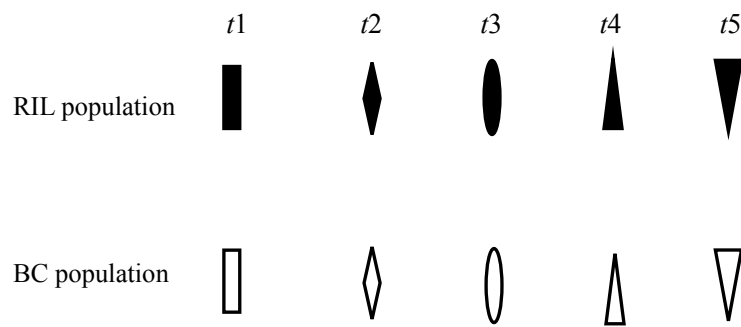


Figure S2 Locations of QTLs controlling plant height identified in two hybrids
* and **, segregation distortion significant at $P = 0.05$ and 0.01 levels, respectively.