

I II III IV V VI VII VIII IX X XI XII XIII XIV XV XVI

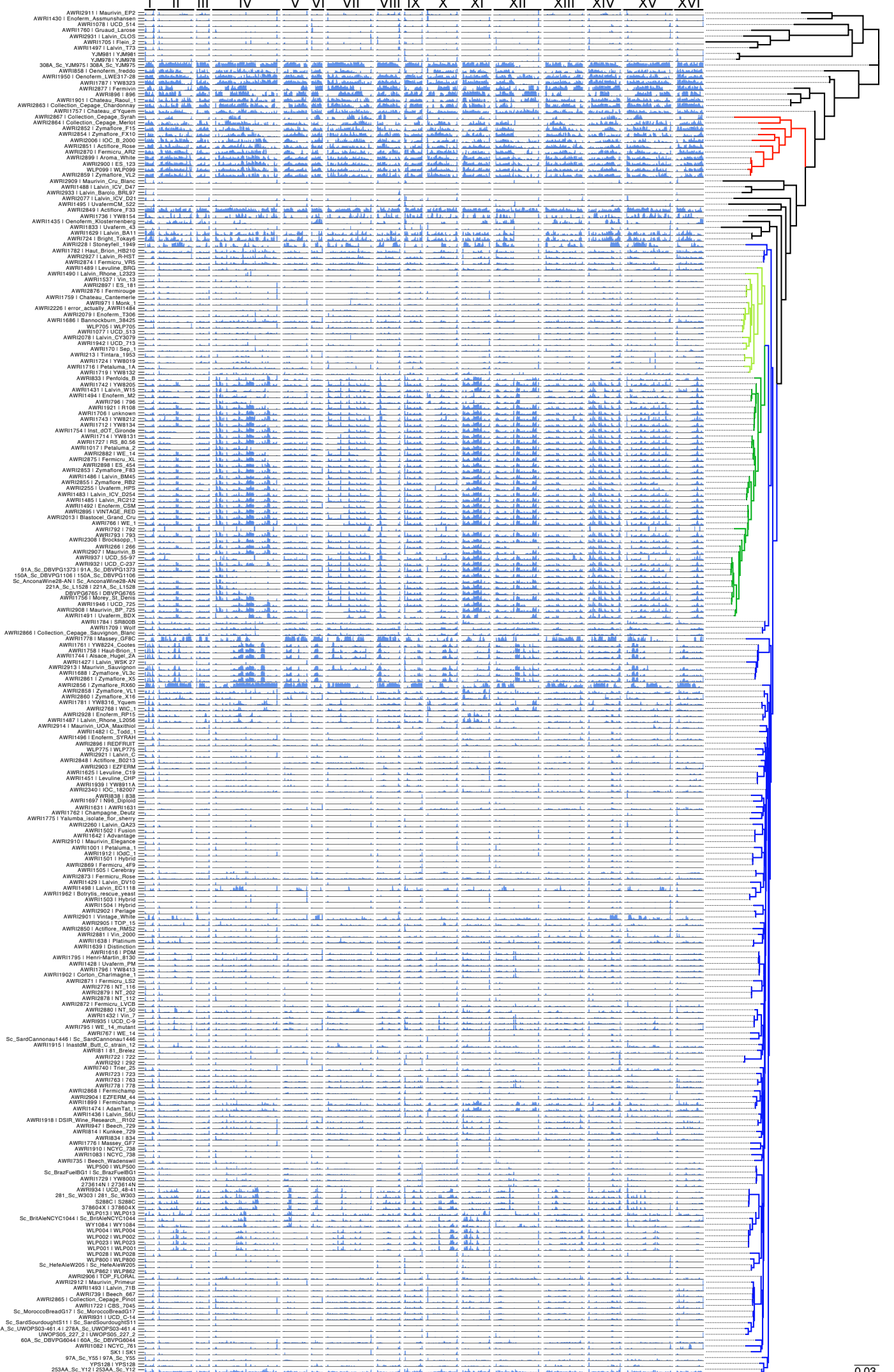


Figure S3. Heterozygosity in *S. cerevisiae* wine strains. Heterozygosity levels observed in 50 kb sliding windows (25 kb step) across the *S. cerevisiae* chromosomes (I - XVI) in each strain. Strains are ordered according to the genome-wide SNP phylogeny and colored according to clade (ale, red; wine, blue and green; PdM, dark green, VIN7, light green).