

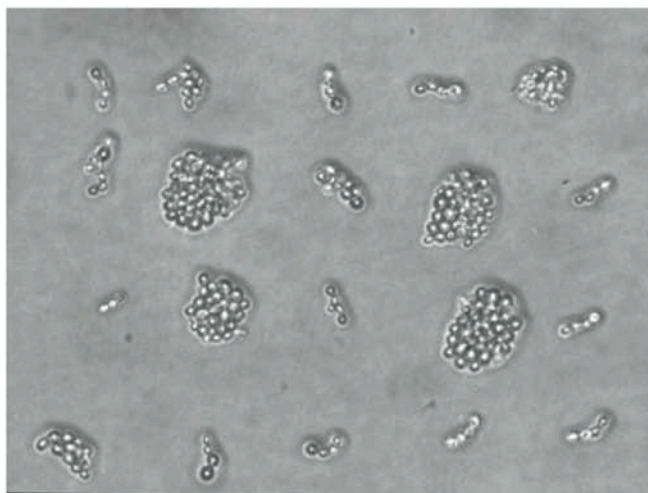
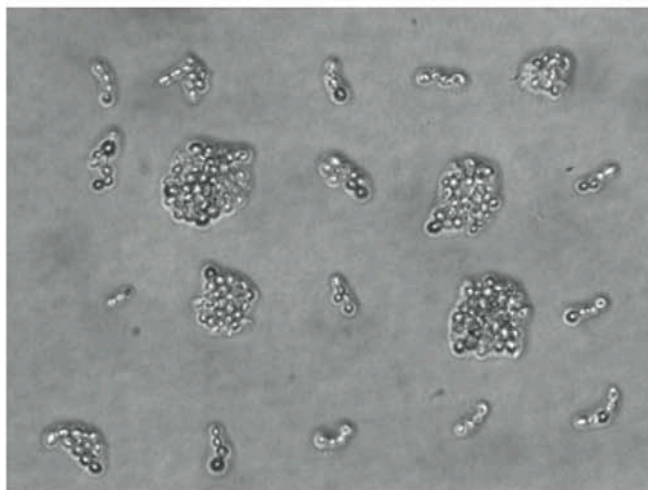
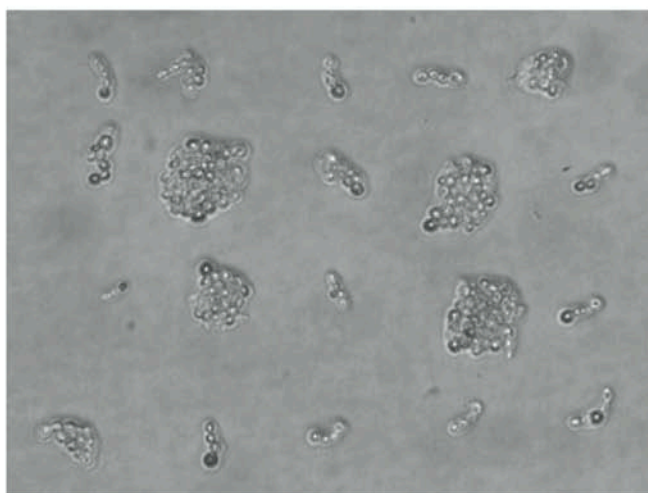
**62 hours****87 hours****112 hours**

FIGURE S2.—Photographs of microcolonies formed by daughter cells born on estradiol during the life span measurement of naïve mother cells. Each photograph displays daughters #1-20 born to a single mother cell, arrayed from top left to bottom right. Times indicate hours after the mother was first placed on estradiol media (equivalent to 35, 60, and 85 hours after the birth of daughter #20). By 62 hours, each microcolony consisted of M-phase arrested cells. Microcolonies showed no change in cell number between 87 and 112 hours.