

GENETICS

Supporting Information

<http://www.genetics.org/cgi/content/full/genetics.109.113274/DC1>

**SIAMESE Cooperates With the CDH1-like Protein CCS52A1
to Establish Endoreplication in *Arabidopsis thaliana* Trichomes**

**Remmy Kasili, Jason D. Walker, L. Alice Simmons, Jing Zhou, Lieven De Veylder
and John C. Larkin**

Copyright © 2010 by the Genetics Society of America
DOI: 10.1534/genetics.109.113274

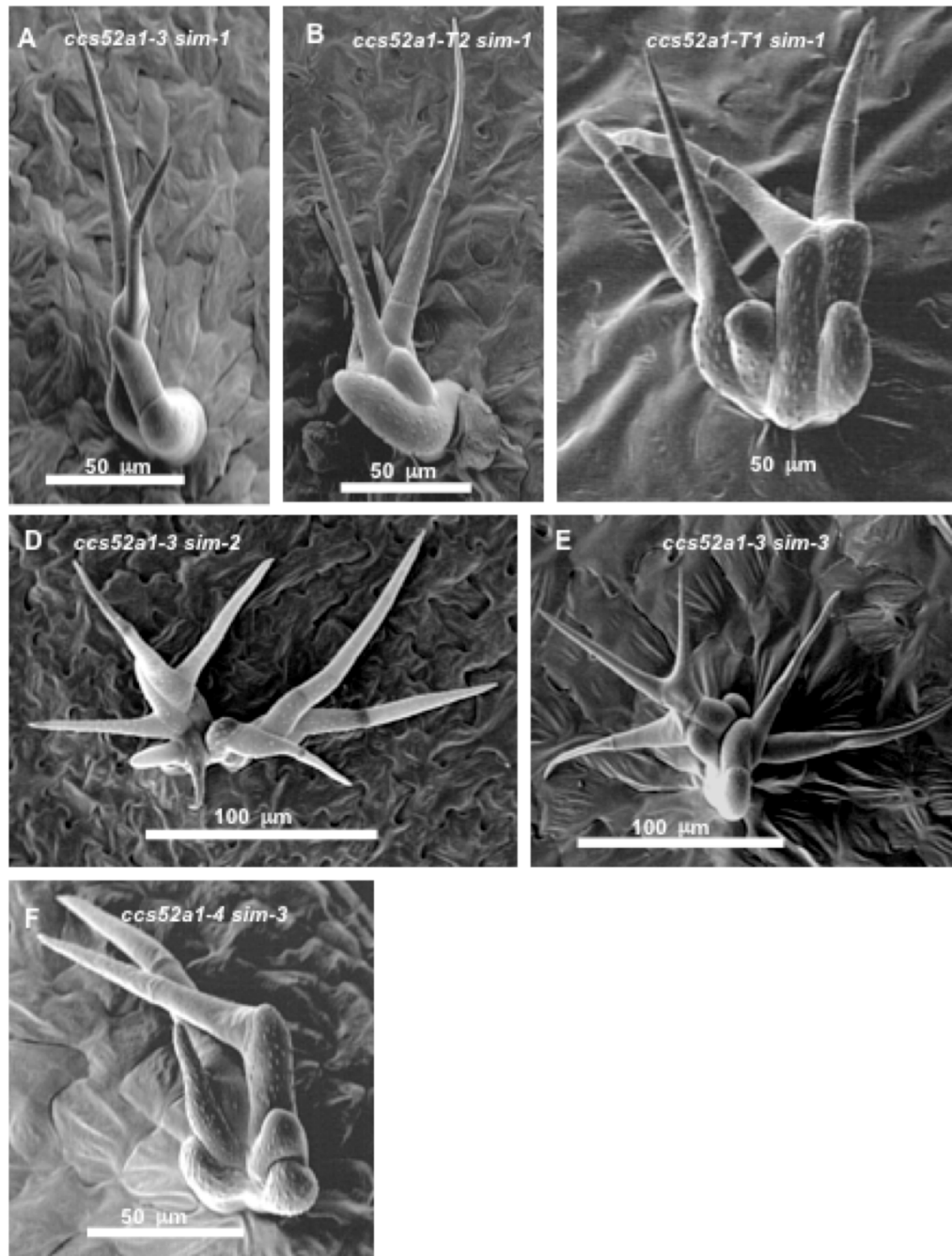


FIGURE S1.—Genetic interaction between *ccs52a1* and *sim* is not allele-specific. (A) *ccs52a1-3 sim-1*. (B) *ccs52a1-T2 sim-1*. (C) *ccs52a1-T1 sim-1*. (D) *ccs52a1-3 sim-2*. (E) *ccs52a1-3 sim-3*. (F) *ccs52a1-4 sim-3*. All images are scanning electron micrographs. Scale bars in (A), (B), (C) and (F) are 50 μm, and in (D) and (E), 100 μm.

TABLE S1
Primers Used For Mapping and Cloning

Primer	Sequence	Purpose
F7H19-3aF	5'-GCTAATGCGTCGTAGTGT-3'	F7H19 CAPS marker
F7H19-3aR	5'-GCAGAACGACTCCTGAAT-3'	F7H19 CAPS marker
T12H17-2F	5'-AACCATCCATAGCCGCCG-3'	T12H17 CAPS marker
T12H17-2R	5'-CGACATCTCCTTGCGTTGTGG-3'	T12H17 CAPS marker
ENS2-1CF	5'-CACCAGGTGTCAATGGTGGGTC-3'	CCS52A1 genomic for complementation
ENS2-1CR3	5'-GTCGGTGTAACGGTGAGAAAC-3'	CCS52A1 genomic for complementation
ENS2-1F	5'-CACCATGGAAGAAGAAGATCCTACAGC-3'	CCS52A1 coding
ENS2-1R1	5'-TTCTCACCGAATTGTTGTTCTACC-3'	CCS52A1 coding

Primers ENS2-1CF, ENS2-1F, have the sequence 5'-CACC-3' at their 5' ends for directional cloning into the GATEWAY entry vector pENTR/D-TOPO (Invitrogen).