

GENETICS

Supporting Information

<http://www.genetics.org/cgi/content/full/genetics.110.115485/DC1>

Mutations in the *Caenorhabditis elegans* eIF2 β Permit Translation Initiation From Non-AUG Start Codons

Yinhua Zhang and Lisa L. Maduzia

Copyright © 2010 by the Genetics Society of America
DOI: 10.1534/genetics.110.115485

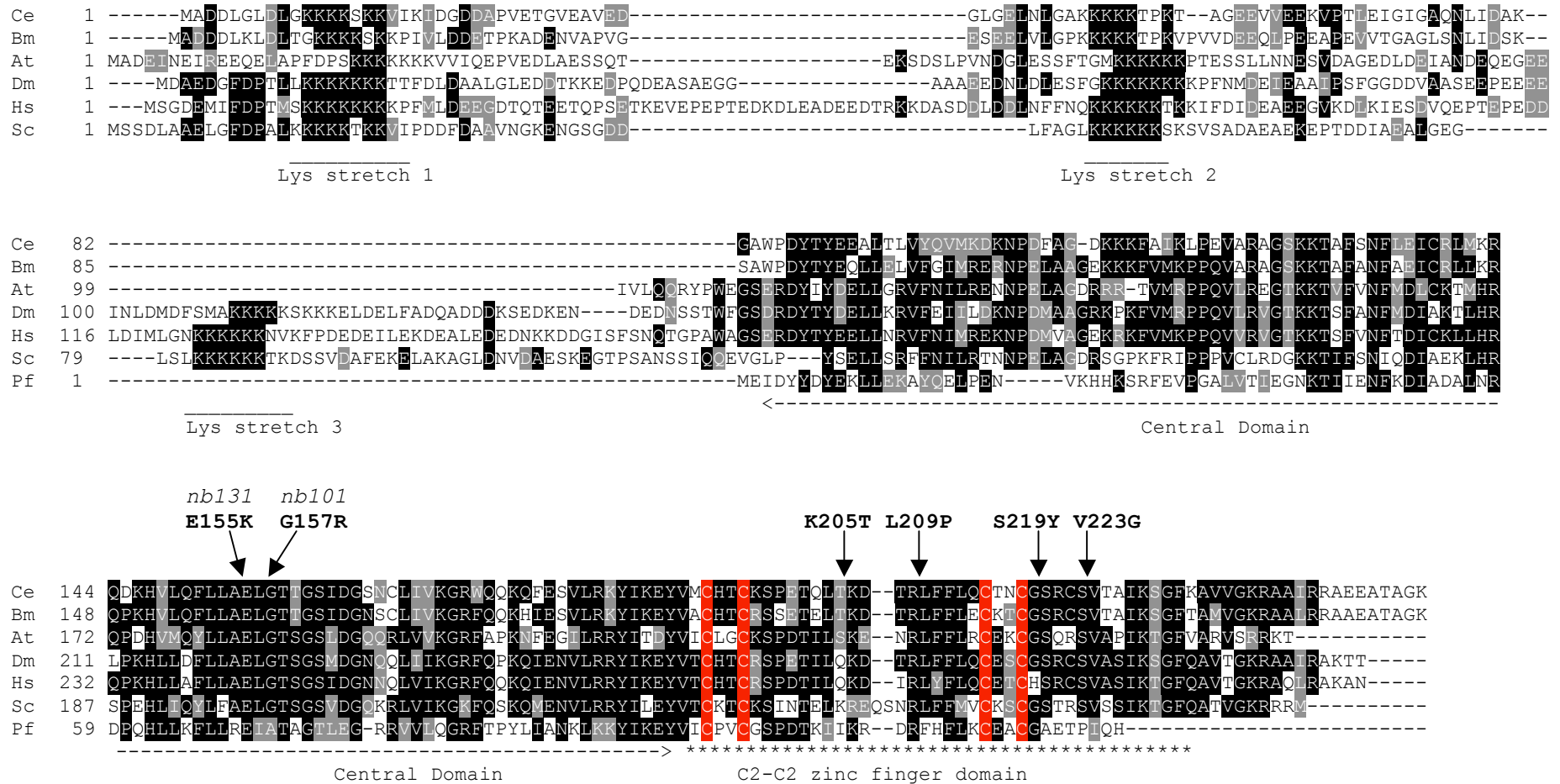


FIGURE S1.—Sequence Alignment of eIF2 β s. Species names: Ce, *Caenorhabditis elegans*; Bm, *Brugia malayi* (a parasitic nematode); At, *Arabidopsis thaliana*; Dm, *Drosophila melanogaster*; Hs, *Homo sapiens*; Sc, *Saccharomyces cerevisiae*; Pf, *Pyrococcus furiosus*.