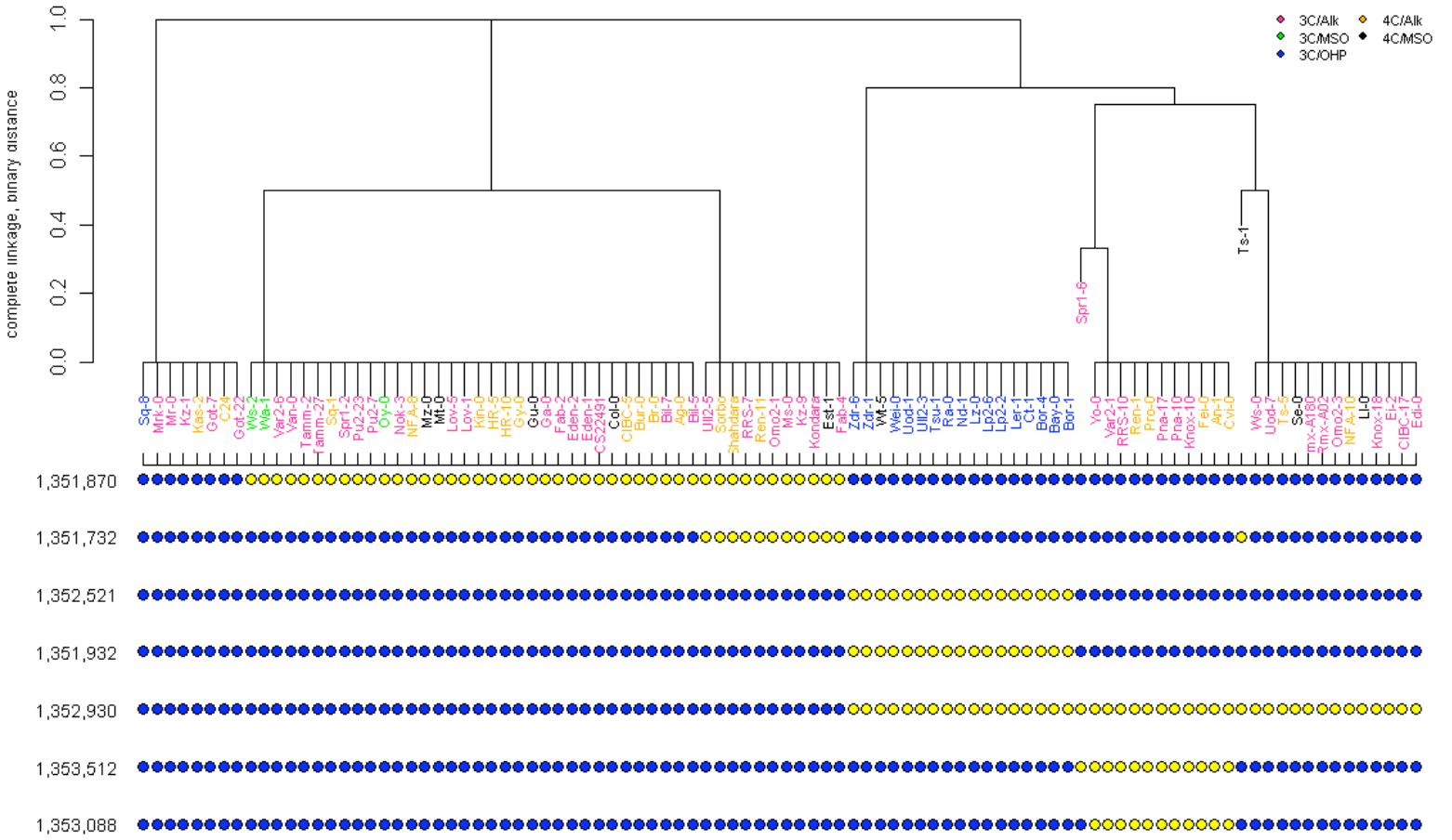
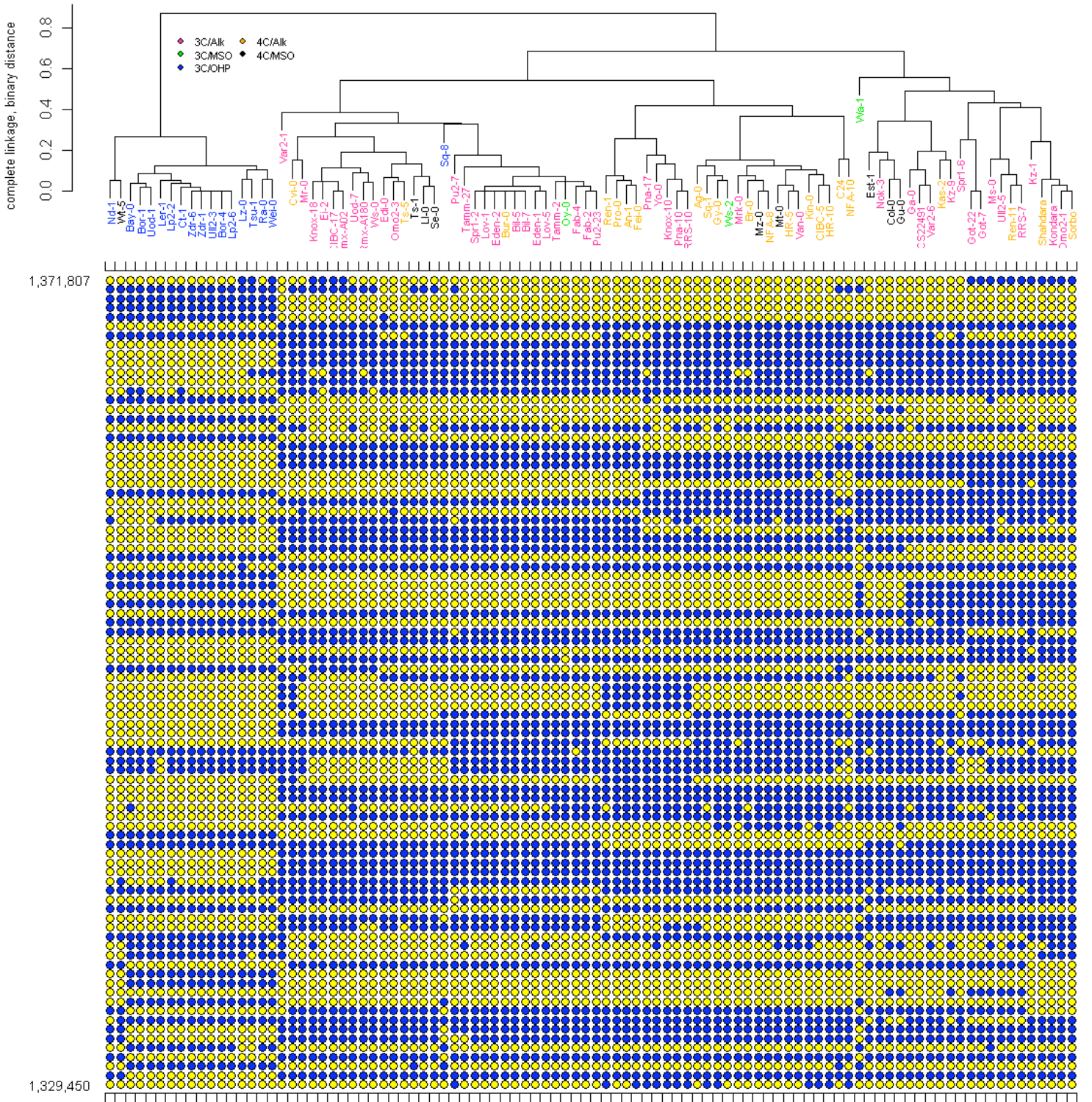
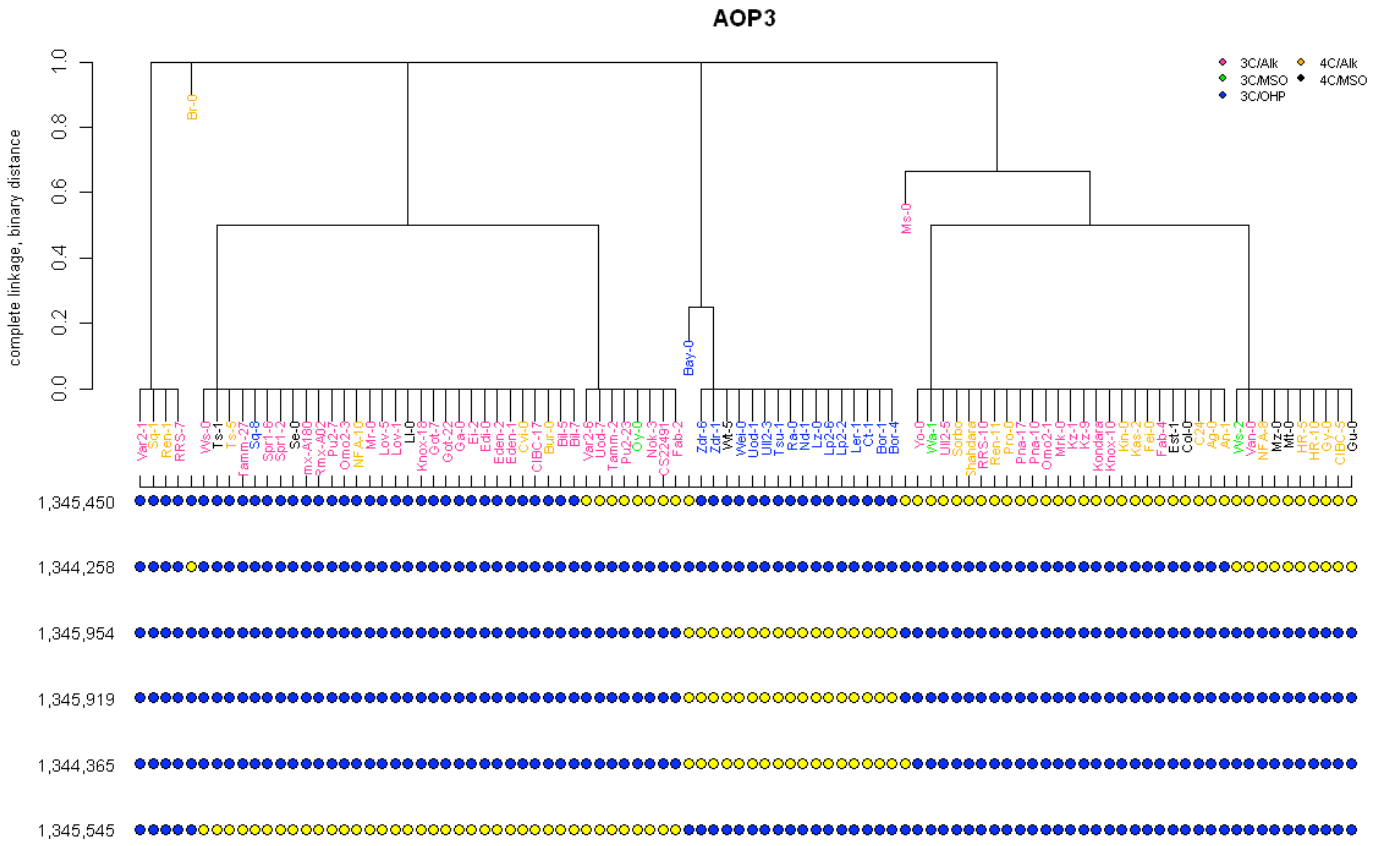


### AOP2

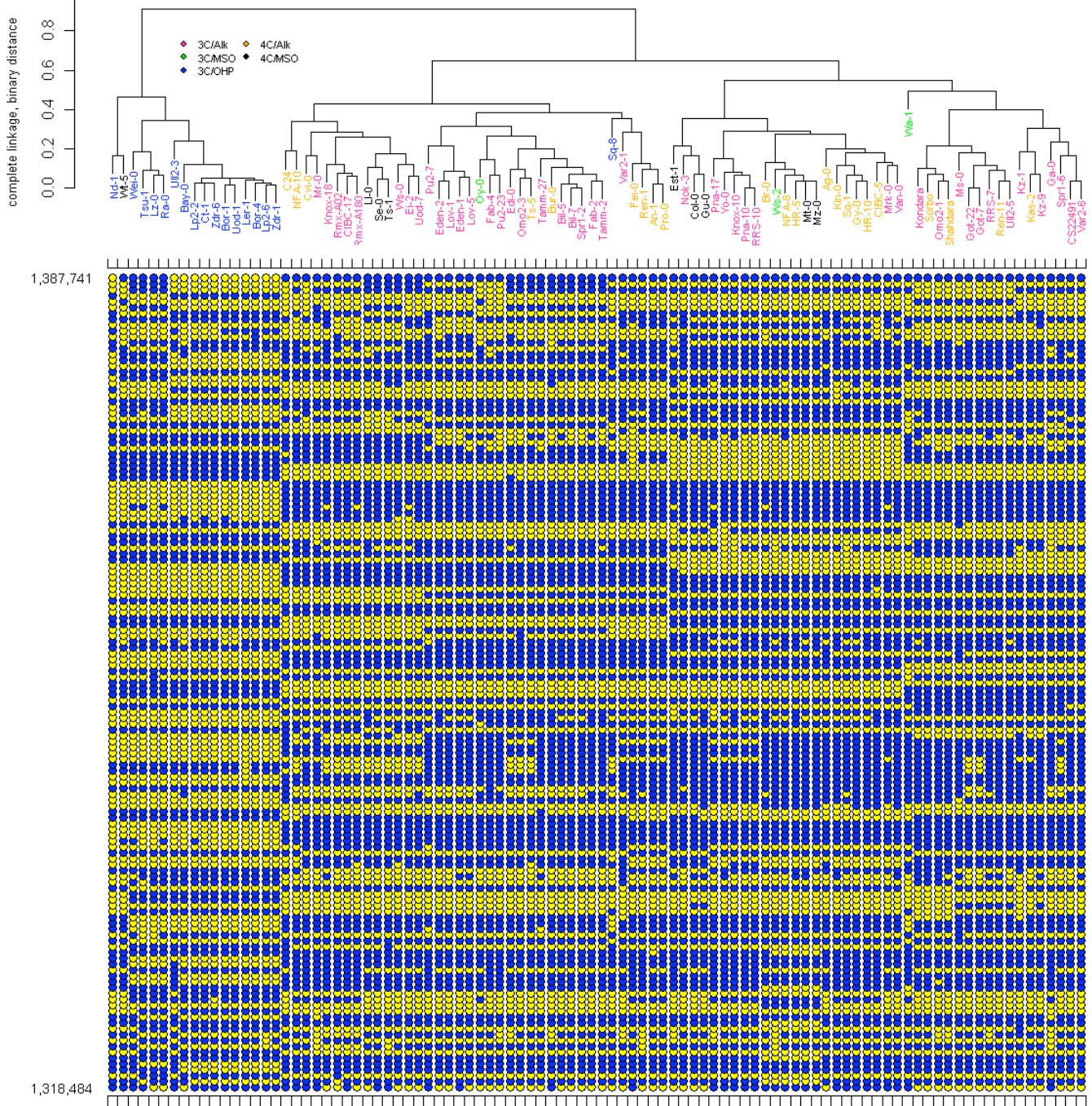


### AOP2





### AOP3



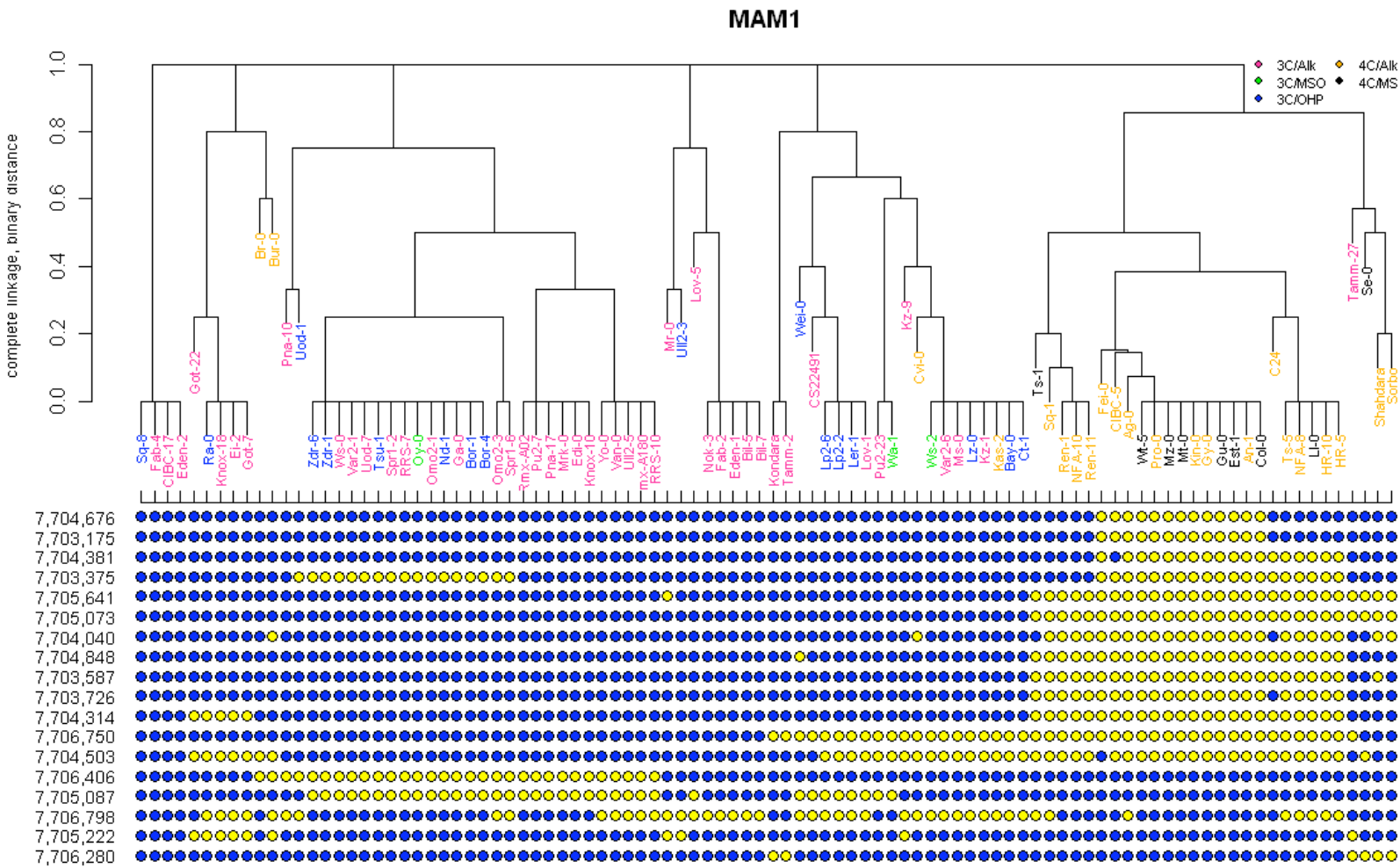


FIGURE S4.—LD Structure at and around the *AOP*, *MAM* and sweep loci. Shown are cladograms of 96 accessions using SNPs within the *AOP2*, *AOP3*, *MAM1*, and *MAM* genes, as well as the two sweep regions. The main GSL structure within each accession is indicated by color of the accession name. Each gene is shown twice, the first figure displays the allelic values of the SNPs within the specific gene itself; blue represents the majority allele and yellow the minority allele. The second figure displays the allelic values of the SNPs that are encompassed by the region of extended LD surrounding the corresponding gene as defined using the 99<sup>th</sup> (or 98<sup>th</sup> or *MAM3*) percentile boundaries from Supplemental Figure 3.