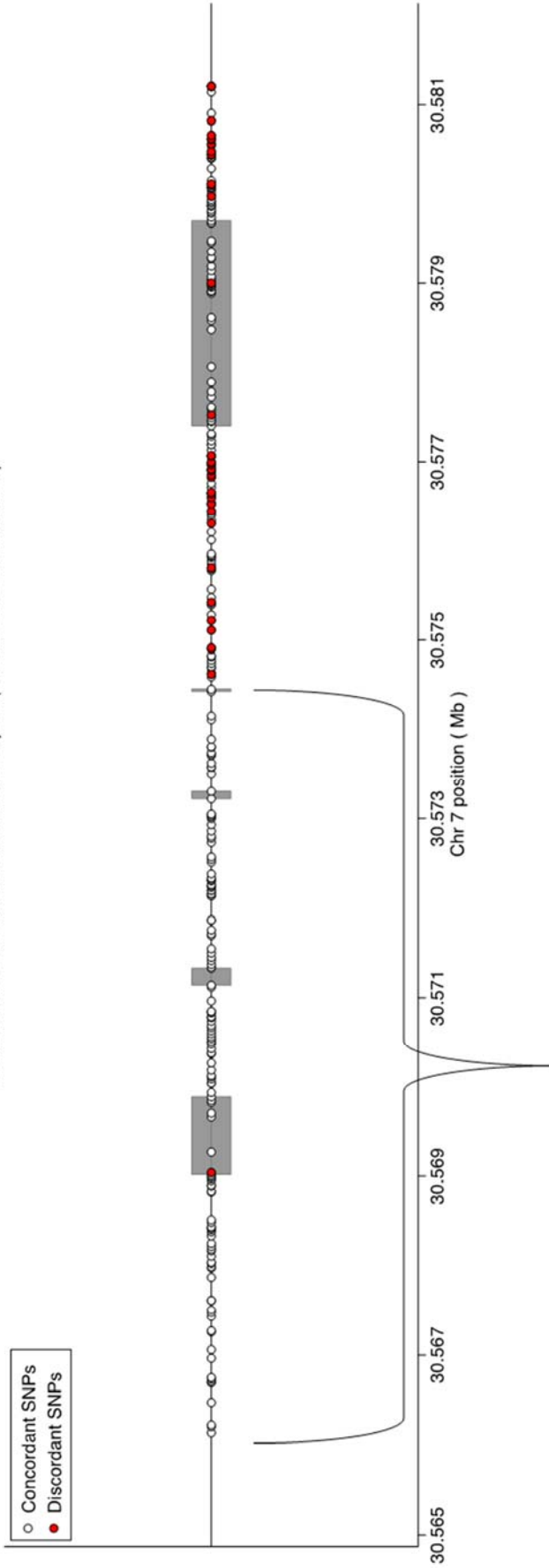


A

Concordant and Discordant SNPs in *Zfp30* (ENSMUST000000032803)



B

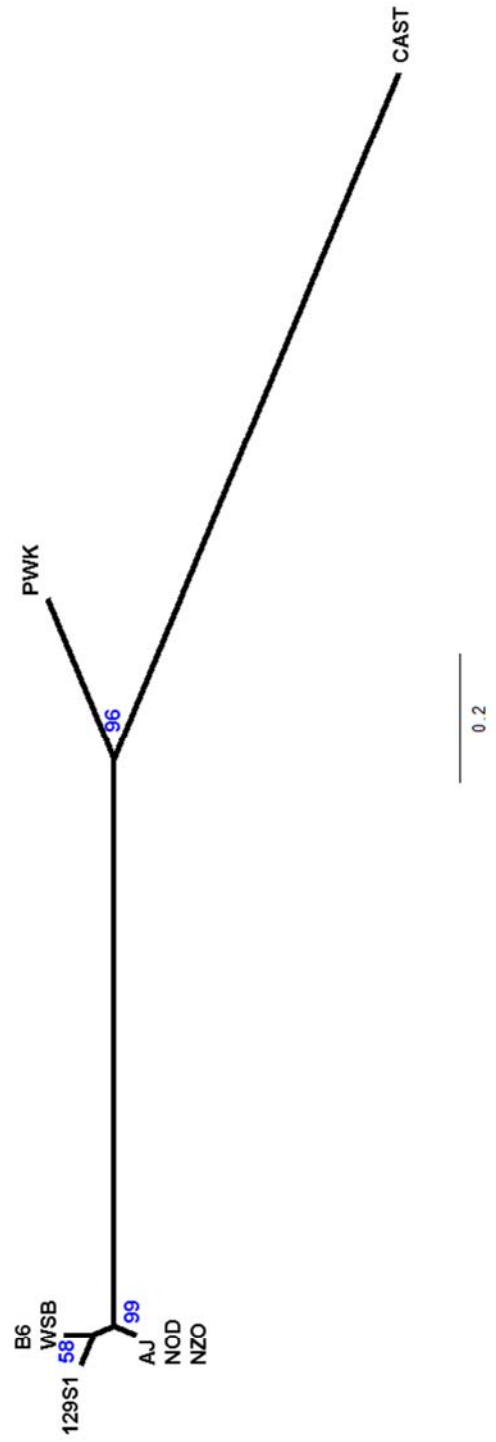


Figure S3 SNPs and haplotypes among CC founder strains at the *Zfp30* locus. A. SNPs (n = 242 SNPs) in *Zfp30* including 3kb of upstream and 1.5 kb of downstream sequence (30,566,017-30,581,221 bp) that are concordant (white circles) or discordant (red circles) with the pattern of gene expression shown in Figure 4. Gray boxes denote exons. **B.** Phylogeny of CC founder haplotypes for *Zfp30* sequence up to exon 4. Blue numbers indicate bootstrap support values.