

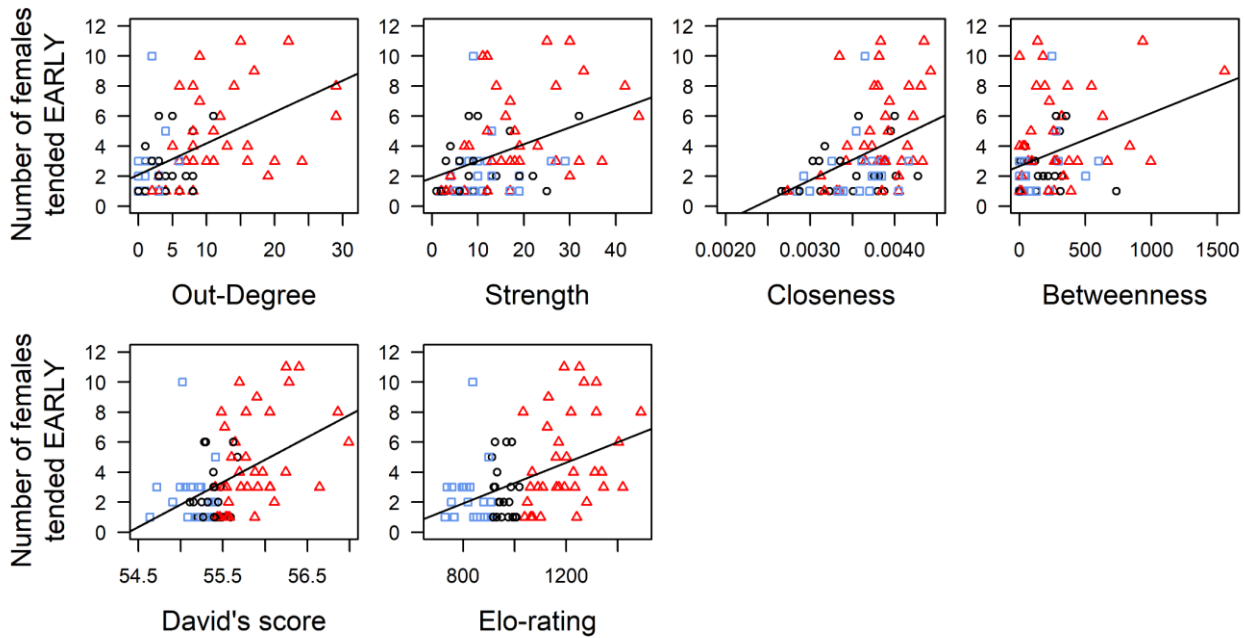
Supplemental Data SD6: Data Supporting Tests of Network and Dominance Measures vs. Tending Tactic Seasonality

Scatterplots of Network and Dominance Measures vs. Tending Tactic Seasonality

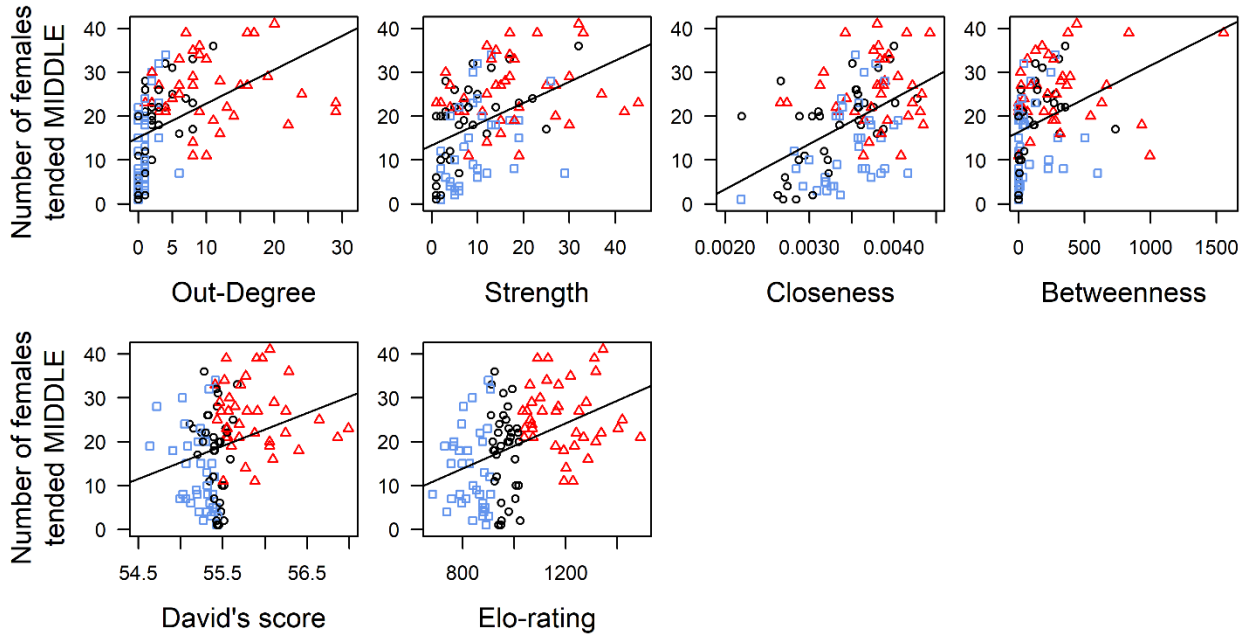
Relationships between tending effort vs. the four network measures (top row) and traditional dominance measures (bottom row). Lines indicate a linear fit to the data, with significant relationships depicted with solid lines. Data points are color and shape coded according to the 33% and 66% quantiles of Elo-rating:

- Blue squares = Elo-rating < 910 (low dominance)
- Black circles = Elo-rating ≥ 910 and < 1026 (mid dominance)
- Red triangles = Elo-rating ≥ 1026 (high dominance)

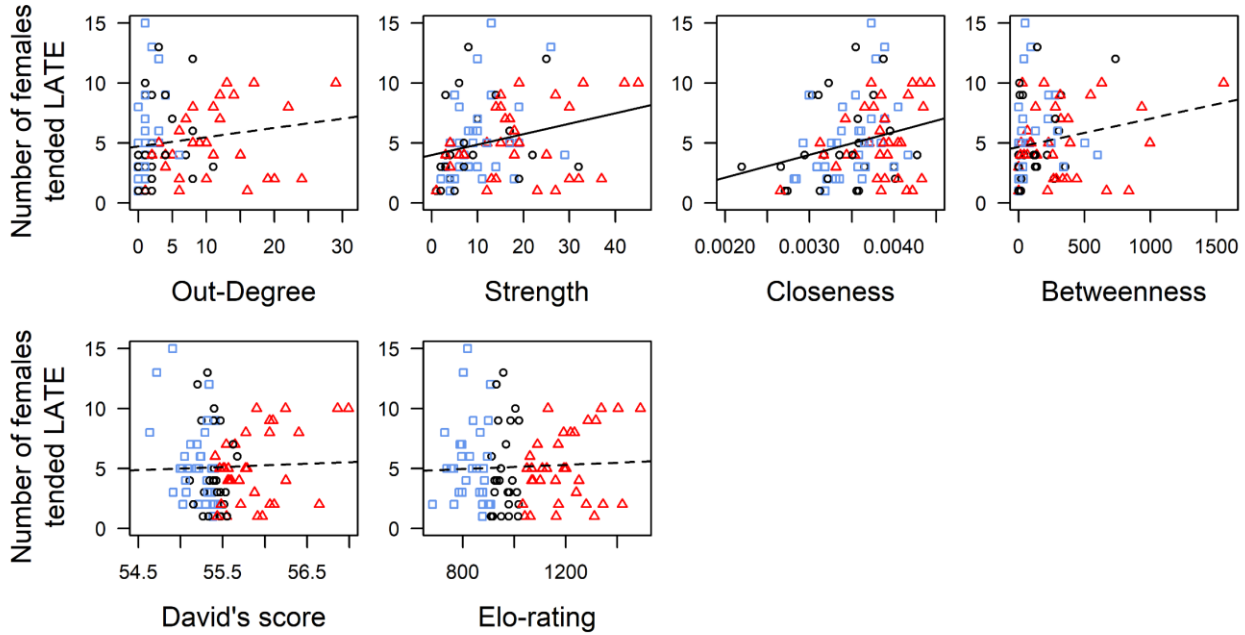
Number of Females Tended in Early Period Scatterplots:



Number of Females Tended in Middle Period Scatterplots:



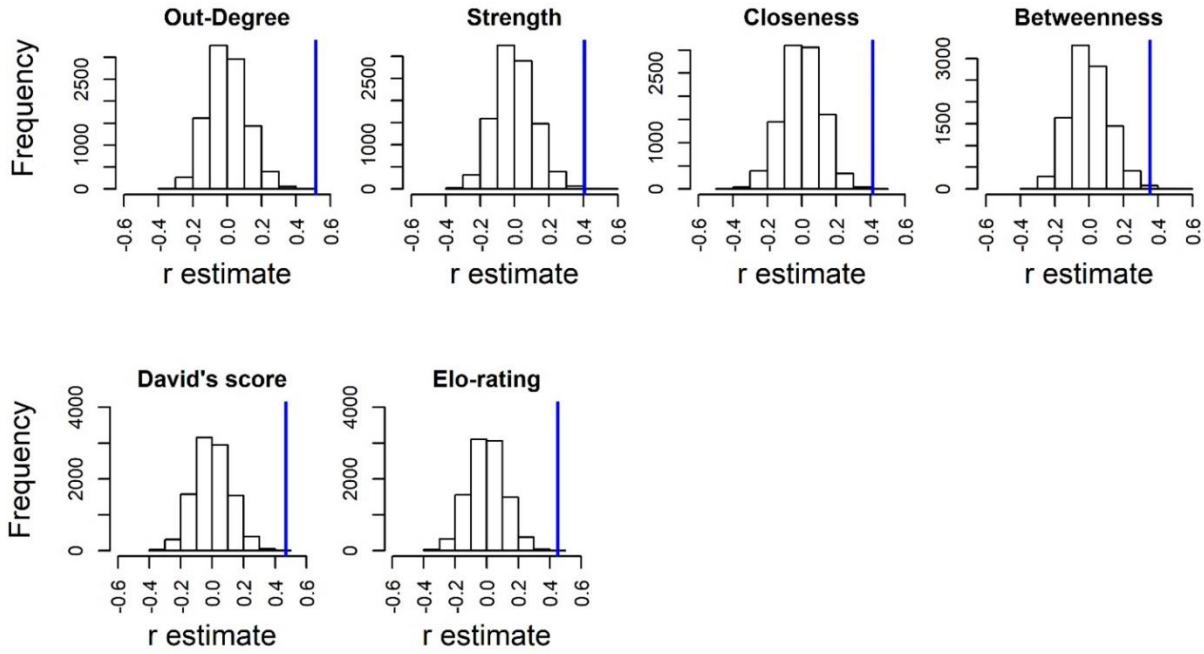
Number of Females Tended in Late Period Scatterplots:



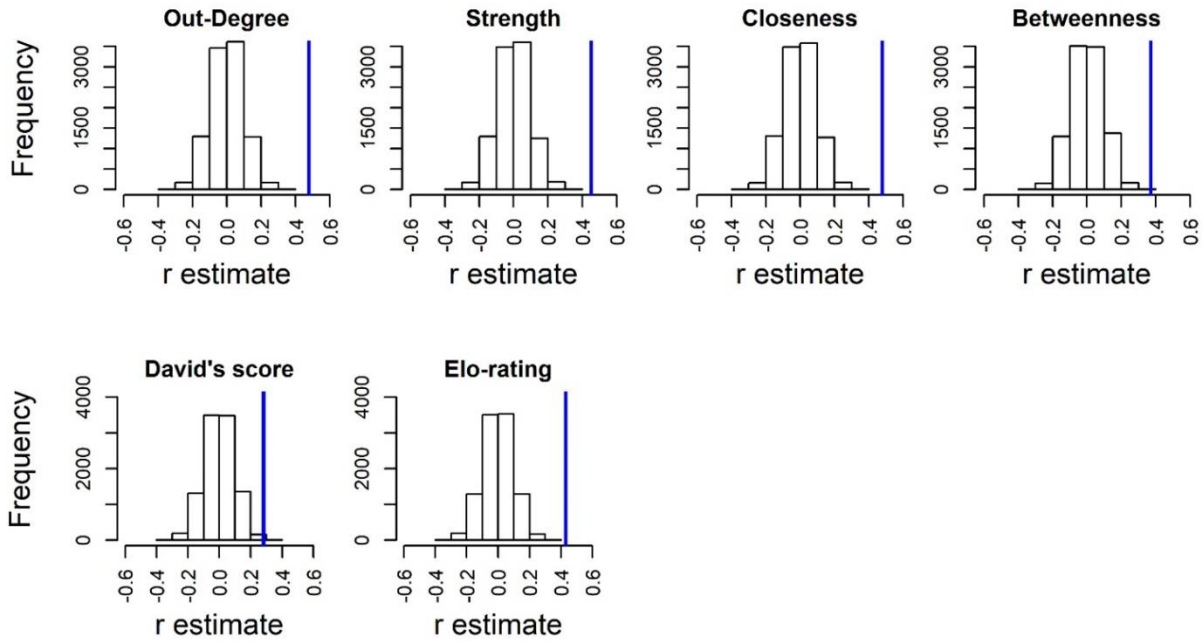
Randomization Histograms for Network and Dominance Measures vs. Tending Tactic Seasonality

Histograms of correlation coefficients (r) for permutations of ID. Randomization procedure was conducted using social network measures (top row) and traditional dominance measures (bottom row). The blue line indicates the observed correlation coefficient (r) for each test.

Number of Females Tended in Early Period Histograms:



Number of Females Tended in Middle Period Histograms:



Number of Females Tended in Late Period Histograms:

