

Supplementary Data

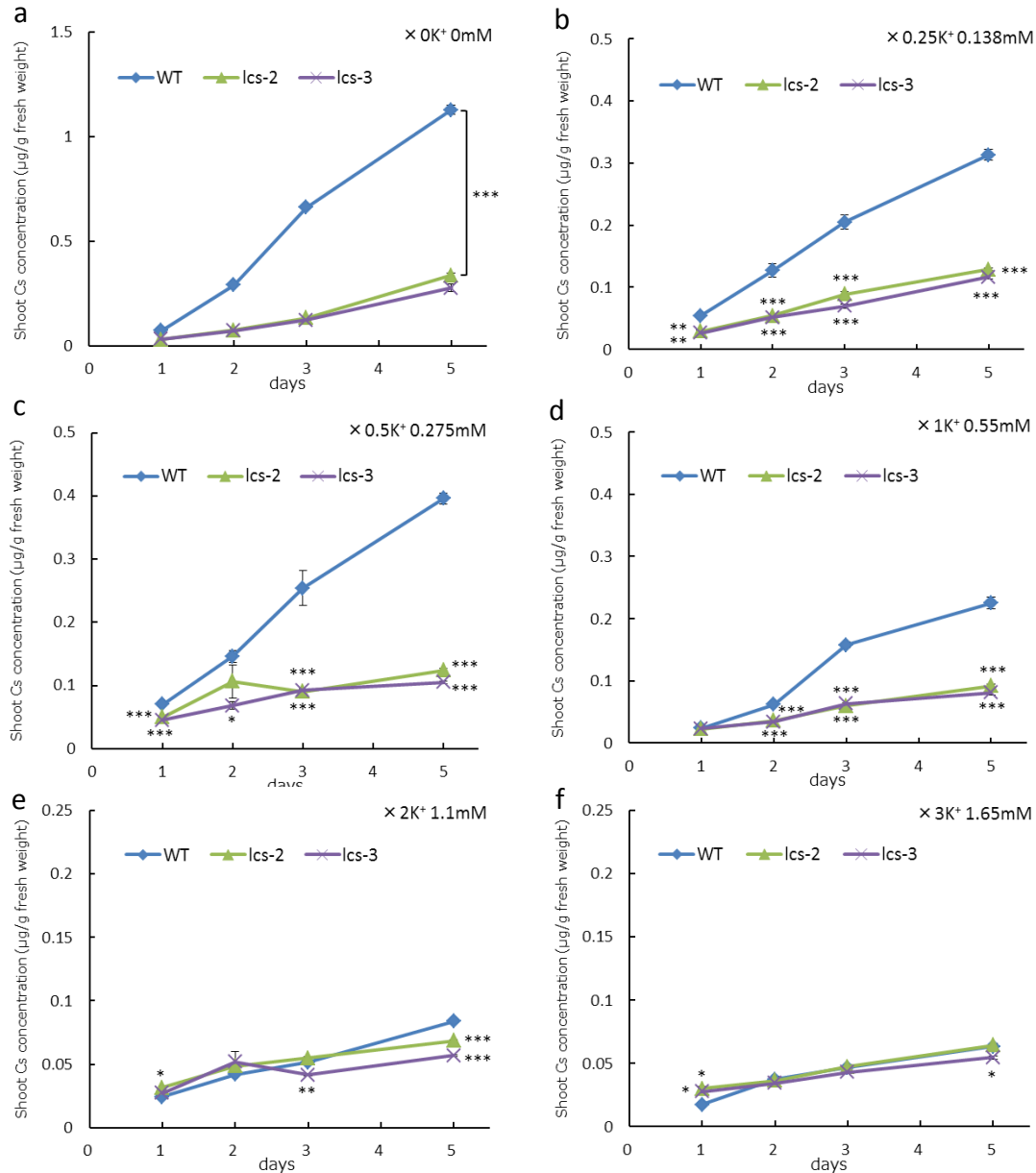


Fig. S3. Caesium uptake into shoots of *lcs* mutants and WT grown in hydroponic conditions. **a–f**, Shoot Cs concentration in 2-week-old seedlings cultivated in Kimura B solution containing 10 ppb ^{133}Cs and $\times 0K^+$ (**a**), $\times 0.25K^+$ (**b**), $\times 0.5K^+$ (**c**), $\times 1K^+$ (**d**), $\times 2K^+$ (**e**), $\times 3K^+$ (**f**). Data are means \pm s.e. ($n=3$). *lcs* mutants were compared with WT (Dunnett's test).